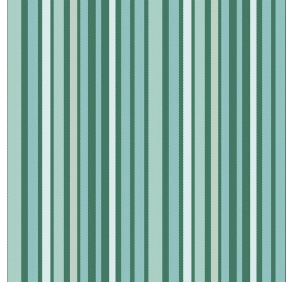
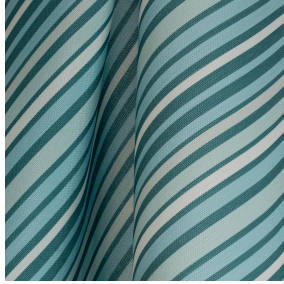




SIENTO RECYCLE UNI Lin 11
Printing support



LUKE Reflet 140
Print pattern



Visual not taking into account the printing medium, the final rendering may vary according to the chosen medium.

Printing support **SIENTO RECYCLE UNI Lin 11**

Print pattern **LUKE Reflet 140**

Heavy canvas fabric, the Siento recyclé is woven with mixed dyed yarns which gives this textured linen effect. The warp and weft are made with recycled polyester yarns. Usable as a printing support. Please note : the background can modify the coloristic rendering.

Technical properties



Flame retardant



Thermal



Acoustic



Recycled fabrics

Applications Roman blinds - Panel curtains - Bedspreads - Valences - Seating - Bed runners - Curtains - Cushions

Composition 80% recycled polyester FR / 20% polyester FR

Weight 330 g/m²

Width 290 cm

Fabric direction Room high or standard direction

Fitting ↔ 30.0 cm ↓ 30.0 cm

Maintenance advice

Label France Terre Textile / OEKO-TEX STANDARD 100 Recyclé

Minimum order 25 linear(s) meter(s)

Technical characteristics

| | |
|-----------------|---|
| Flame retardant | M1 / B1 / IMO PASS / UNI 8456 / 9174 Classe Uno |
| Acoustic | Noise reduction coefficient (NRC) : 0.73 |
| Optical index | Light reflexion : 41 % |
| | Light absorption : 51 % |
| | Light transmission : 8 % |
| Thermal index | Solar reflexion : 55 % |
| | Solar absorption : 29 % |
| | Solar transmission : 16 % |
| | UV transmission : 5 % |
| | Gtot : Gt 39 % Fc 66 % |
| | |
| Resilience | Lightfastness (units Class/8) 6 |
| | Pilling 4-5 |
| | Dimensional Stability (%) |
| | Warp -1,5 |
| | Weft -1,5 |
| | Martindale (Cycles) 90000 |
| | Breaking Elongation |
| | Warp 41 |
| | Weft 44 |
| | Breaking load (daN) |
| | Warp 180 |
| Weft 150 | |