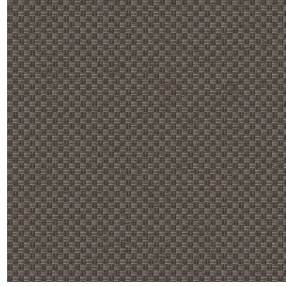




**SIENTO RECYCLE UNI Lin 11**  
Printing support



**CHARLOTTE Terre 107**  
Print pattern



Visual not taking into account the printing medium, the final rendering may vary according to the chosen medium.



## Printing support **SIENTO RECYCLE UNI Lin 11** Print pattern **CHARLOTTE Terre 107**

Heavy canvas fabric, the Siento recyclé is woven with mixed dyed yarns which gives this textured linen effect. The warp and weft are made with recycled polyester yarns. Usable as a printing support. Please note : the background can modify the coloristic rendering.

### Technical properties



Flame retardant



Thermal



Acoustic



Recycled fabrics

**Applications** Roman blinds - Panel curtains - Bedspreads - Valences - Seating - Bed runners - Curtains - Cushions

**Composition** 80% recycled polyester FR / 20% polyester FR

**Weight** 330 g/m<sup>2</sup>

**Width** 290 cm

**Fabric direction** Room high or standard direction

**Fitting** ↔ 0.0 cm ↑ 0.0 cm

**Maintenance advice**     

**Label** France Terre Textile / OEKO-TEX STANDARD 100 Recyclé

**Minimum order** 25 linear(s) meter(s)

## Technical characteristics

Flame retardant	M1 / B1 / IMO PASS / UNI 8456 / 9174 Classe Uno
Acoustic	Noise reduction coefficient (NRC) : <b>0.73</b>
Optical index	Light reflexion : <b>41 %</b> Light absorption : <b>51 %</b> Light transmission : <b>8 %</b>
Thermal index	Solar reflexion : <b>55 %</b> Solar absorption : <b>29 %</b> Solar transmission : <b>16 %</b> UV transmission : <b>5 %</b> Gtot : <b>Gt 39 % Fc 66 %</b>
Resilience	Lightfastness (units Class/8) <b>6</b> Pilling <b>4-5</b> Dimensional Stability (%) Warp <b>-1,5</b> Weft <b>-1,5</b> Martindale (Cycles) <b>90000</b> Breaking Elongation Warp <b>41</b> Weft <b>44</b> Breaking load (daN) Warp <b>180</b> Weft <b>150</b>

# Print pattern CHARLOTTE



CHARLOTTE Absinthe  
132



CHARLOTTE Anis 62



CHARLOTTE Beige 63



CHARLOTTE Bouteille  
101



CHARLOTTE Brume 47



CHARLOTTE Cerise 66



CHARLOTTE Chamois  
111



CHARLOTTE Chataigne  
55



CHARLOTTE Chaudron  
118



CHARLOTTE Chocolat  
70



CHARLOTTE Citrouille  
136



CHARLOTTE Cobalt 114



CHARLOTTE Crepuscule  
45



CHARLOTTE Cuivre 50



CHARLOTTE Ébene 124



CHARLOTTE Ficelle 09



CHARLOTTE Fiesta 131



CHARLOTTE Grenat 56



CHARLOTTE Gris 97



CHARLOTTE Hortensia  
134



(Headquarters) SOTEXPRO - 510 route de Montchal - 42360 PANISSIÈRES - FRANCE - +33 4 77 27 60 60  
(Showroom) Le LAB' SOTEXPRO - 4 rue du Mail - 75002 PARIS - FRANCE

Non-contractual photos and colors - Indicative fitting - Fitting may vary depending on support selected

# Print pattern CHARLOTTE



CHARLOTTE Lagon 110



CHARLOTTE Lilas 19



CHARLOTTE Lin 11



CHARLOTTE Maïs 37



CHARLOTTE Melon 22



CHARLOTTE Menthe  
122



CHARLOTTE Mordore  
133



CHARLOTTE Mousse 92



CHARLOTTE Noir 10



CHARLOTTE Océan 91



CHARLOTTE Opéra 104



CHARLOTTE Orange 15



CHARLOTTE Pacifique  
54



CHARLOTTE Prairie 125



CHARLOTTE Printemps  
130



CHARLOTTE Sienne 29



CHARLOTTE Souris 31



CHARLOTTE Tilleul 103



CHARLOTTE Vieux rose  
64



CHARLOTTE Violine 105



(Headquarters) SOTEXPRO - 510 route de Montchal - 42360 PANISSIÈRES - FRANCE - +33 4 77 27 60 60  
(Showroom) Le LAB' SOTEXPRO - 4 rue du Mail - 75002 PARIS - FRANCE

Non-contractual photos and colors - Indicative fitting - Fitting may vary depending on support selected