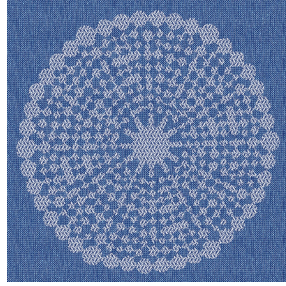




**SIENTO RECYCLE UNI Lin 11**  
Printing support



**ANGELE Océan 91**  
Print pattern



Visual not taking into account the printing medium, the final rendering may vary according to the chosen medium.

## Printing support **SIENTO RECYCLE UNI Lin 11**

### Print pattern **ANGELE Océan 91**

Heavy canvas fabric, the Siento recyclé is woven with mixed dyed yarns which gives this textured linen effect. The warp and weft are made with recycled polyester yarns. Usable as a printing support. Please note : the background can modify the coloristic rendering.

#### Technical properties



Flame retardant



Thermal



Acoustic



Recycled fabrics

**Applications** Roman blinds - Panel curtains - Bedspreads - Valences - Seating - Bed runners - Curtains - Cushions

**Composition** 80% recycled polyester FR / 20% polyester FR

**Weight** 330 g/m<sup>2</sup>

**Width** 290 cm

**Fabric direction** Room high or standard direction

**Fitting** ↔ 30.0 cm ↓ 30.0 cm

**Maintenance advice**     

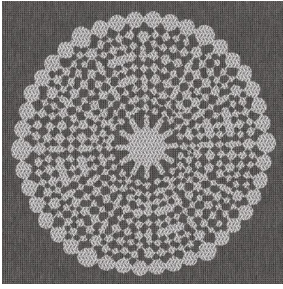
**Label** France Terre Textile / OEKO-TEX STANDARD 100 Recyclé

**Minimum order** 25 linear(s) meter(s)

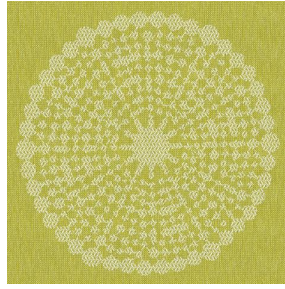
## Technical characteristics

Flame retardant	M1 / B1 / IMO PASS / UNI 8456 / 9174 Classe Uno
Acoustic	Noise reduction coefficient (NRC) : <b>0.73</b>
Optical index	Light reflexion : <b>41 %</b>
	Light absorption : <b>51 %</b>
	Light transmission : <b>8 %</b>
Thermal index	Solar reflexion : <b>55 %</b>
	Solar absorption : <b>29 %</b>
	Solar transmission : <b>16 %</b>
	UV transmission : <b>5 %</b>
	Gtot : <b>Gt 39 % Fc 66 %</b>
	Resilience
	Pilling <b>4-5</b>
	Dimensional Stability (%)
	Warp <b>-1,5</b>
	Weft <b>-1,5</b>
	Martindale (Cycles) <b>90000</b>
	Breaking Elongation
	Warp <b>41</b>
	Weft <b>44</b>
	Breaking load (daN)
	Warp <b>180</b>
	Weft <b>150</b>

# Print pattern ANGELE



ANGELE Taupe 95



ANGELE Anis 62



ANGELE Fuchsia 33



ANGELE Orange 15



ANGELE Prune 84



ANGELE Sable 67



ANGELE Turquoise 53



ANGELE Vert 24



(Headquarters) SOTEXPRO - 510 route de Montchal - 42360 PANISSIÈRES - FRANCE - +33 4 77 27 60 60  
(Showroom) Le LAB' SOTEXPRO - 4 rue du Mail - 75002 PARIS - FRANCE

Non-contractual photos and colors - Indicative fitting - Fitting may vary depending on support selected