



SIENTO RECYCLE UNI Lin 11
Printing support



ANGELE Fuchsia 33
Print pattern



Visual not taking into account the printing medium, the final rendering may vary according to the chosen medium.

Printing support **SIENTO RECYCLE UNI Lin 11**

Print pattern **ANGELE Fuchsia 33**

Heavy canvas fabric, the Siento recyclé is woven with mixed dyed yarns which gives this textured linen effect. The warp and weft are made with recycled polyester yarns. Usable as a printing support. Please note : the background can modify the coloristic rendering.

Technical properties



Flame retardant



Thermal



Acoustic



Recycled fabrics

Applications

Roman blinds - Panel curtains - Bedspreads - Valences - Seating - Bed runners - Curtains - Cushions

Composition 80% recycled polyester FR / 20% polyester FR

Weight 330 g/m²

Width 290 cm

Fabric direction Room high or standard direction

Fitting ↔ 30.0 cm ↓ 30.0 cm

Maintenance advice     

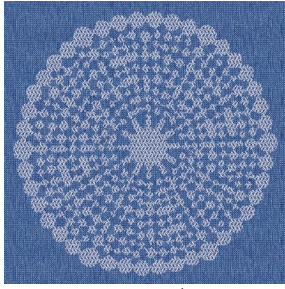
Label France Terre Textile / OEKO-TEX STANDARD 100 Recyclé

Minimum order 25 linear(s) meter(s)

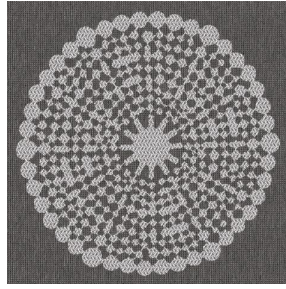
Technical characteristics

Flame retardant	M1 / B1 / IMO PASS / UNI 8456 / 9174 Classe Uno
Acoustic	Noise reduction coefficient (NRC) : 0.73
Optical index	Light reflexion : 41 % Light absorption : 51 % Light transmission : 8 %
Thermal index	Solar reflexion : 55 % Solar absorption : 29 % Solar transmission : 16 % UV transmission : 5 % Gtot : Gt 39 % Fc 66 %
Resilience	Lightfastness (units Class/8) 6 Pilling 4-5 Dimensional Stability (%) Warp -1,5 Weft -1,5 Martindale (Cycles) 90000 Breaking Elongation Warp 41 Weft 44 Breaking load (daN) Warp 180 Weft 150

Print pattern ANGELE



ANGELE Océan 91



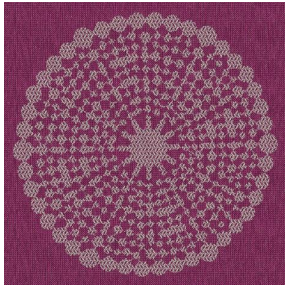
ANGELE Taupe 95



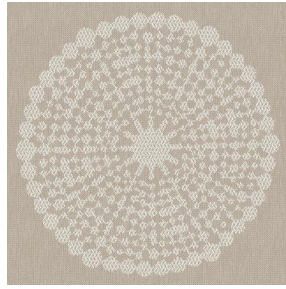
ANGELE Anis 62



ANGELE Orange 15



ANGELE Prune 84



ANGELE Sable 67



ANGELE Turquoise 53



ANGELE Vert 24



(Headquarters) SOTEXPRO - 510 route de Montchal - 42360 PANISSIÈRES - FRANCE - +33 4 77 27 60 60
(Showroom) Le LAB' SOTEXPRO - 4 rue du Mail - 75002 PARIS - FRANCE

Non-contractual photos and colors - Indicative fitting - Fitting may vary depending on support selected