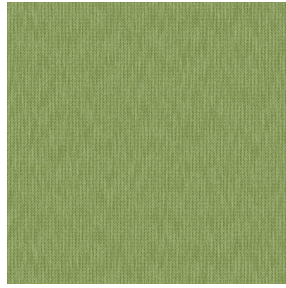


SIENTO RECYCLE UNI Lin 11
Printing support



CALI Lierre 24
Print pattern

Printing support **SIENTO RECYCLE UNI Lin 11** Print pattern **CALI Lierre 24**

Heavy canvas fabric, the Siento recyclé is woven with mixed dyed yarns which gives this textured linen effect. The warp and weft are made with recycled polyester yarns. Usable as a printing support. Please note : the background can modify the coloristic rendering.

Technical properties



Flame retardant



Thermal



Acoustic



Recycled fabrics

Applications Roman blinds - Panel curtains - Bedspreads - Valences - Seating - Bed runners - Curtains - Cushions

Composition 80% recycled polyester FR / 20% polyester FR

Weight 330 g/m²

Width 290 cm

Fabric direction Room high or standard direction

Fitting ↔ 33.0 cm ↓ 33.0 cm

Maintenance advice

Label France Terre Textile / OEKO-TEX STANDARD 100 Recyclé

Minimum order 25 linear(s) meter(s)



Visual not taking into account the printing medium, the final rendering may vary according to the chosen medium.

Technical characteristics

Flame retardant	M1 / B1 / IMO PASS / UNI 8456 / 9174 Classe Uno
Acoustic	Noise reduction coefficient (NRC) : 0.73
Optical index	Light reflexion : 41 %
	Light absorption : 51 %
	Light transmission : 8 %
Thermal index	Solar reflexion : 55 %
	Solar absorption : 29 %
	Solar transmission : 16 %
	UV transmission : 5 %
	Gtot : Gt 39 % Fc 66 %
	Resilience
	Pilling 4-5
	Dimensional Stability (%)
	Warp -1,5
	Weft -1,5
	Martindale (Cycles) 90000
	Breaking Elongation
	Warp 41
	Weft 44
	Breaking load (daN)
	Warp 180
	Weft 150

Print pattern CALI



CALI Orange 15



CALI Terracotta 65



CALI Jade 116



CALI Soleil 127



CALI Etang 165



CALI Naturel 26



(Headquarters) SOTEXPRO - 510 route de Montchal - 42360 PANISSIÈRES - FRANCE - +33 4 77 27 60 60
(Showroom) Le LAB' SOTEXPRO - 4 rue du Mail - 75002 PARIS - FRANCE

Non-contractual photos and colors - Indicative fitting - Fitting may vary depending on support selected