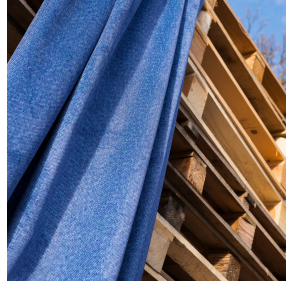
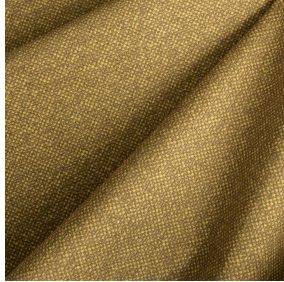




**SIENTO RECYCLE UNI  
Naturel 26**  
Printing support



**ANATOLE Or 94**  
Print pattern



Visual not taking into account the printing medium, the final rendering may vary according to the chosen medium.

## Printing support **SIENTO RECYCLE UNI Naturel 26** Print pattern **ANATOLE Or 94**

Heavy canvas fabric, the Siento recyclé is woven with mixed dyed yarns which gives this textured linen effect. The warp and weft are made with recycled polyester yarns. Usable as a printing support. Please note : the background can modify the coloristic rendering.

### Technical properties



Flame retardant



Thermal



Acoustic



Recycled fabrics

**Applications** Roman blinds - Panel curtains - Bedspreads - Valences - Seating - Bed runners - Curtains - Cushions

**Composition** 80% recycled polyester FR / 20% polyester FR

**Weight** 330 g/m<sup>2</sup>

**Width** 290 cm

**Fabric direction** Room high or standard direction

**Fitting** ↔ cm ↓ cm

**Maintenance advice**

**Label** France Terre Textile / OEKO-TEX STANDARD 100 Recyclé

**Minimum order** 25 linear(s) meter(s)

## Technical characteristics

Flame retardant	M1 / B1 / IMO PASS / UNI 8456 / 9174 Classe Uno
Acoustic	Noise reduction coefficient (NRC) : <b>0.73</b>
Optical index	Light reflexion : <b>52 %</b>
	Light absorption : <b>40 %</b>
	Light transmission : <b>8 %</b>
Thermal index	Solar reflexion : <b>61 %</b>
	Solar absorption : <b>24 %</b>
	Solar transmission : <b>15 %</b>
	UV transmission : <b>3 %</b>
	Gtot : <b>Gt 37 % Fc 63 %</b>
	Resilience
	Pilling <b>4-5</b>
	Dimensional Stability (%)
	Warp <b>-1,5</b>
	Weft <b>-1,5</b>
	Martindale (Cycles) <b>90000</b>
	Breaking Elongation
	Warp <b>41</b>
	Weft <b>44</b>
	Breaking load (daN)
	Warp <b>180</b>
	Weft <b>150</b>

# Print pattern ANATOLE



ANATOLE Naturel 26



ANATOLE lin 11



ANATOLE Ficelle 09



ANATOLE Celadon 135



ANATOLE Océan 91



ANATOLE Titanium 98



ANATOLE Cactus 36



ANATOLE mousse 92



ANATOLE Chaudron  
118



ANATOLE Amarante  
108



ANATOLE Taupe 95



(Headquarters) SOTEXPRO - 510 route de Montchal - 42360 PANISSIÈRES - FRANCE - +33 4 77 27 60 60  
(Showroom) Le LAB' SOTEXPRO - 4 rue du Mail - 75002 PARIS - FRANCE

*Non-contractual photos and colors - Indicative fitting - Fitting may vary depending on support selected*