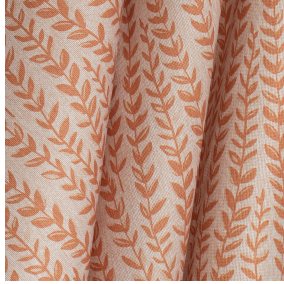




**SIENTO RECYCLE UNI**  
Naturel 26  
Printing support



**MAELLIE Terracotta 65**  
Print pattern



Visual not taking into account the printing medium, the final rendering may vary according to the chosen medium.

## Printing support **SIENTO RECYCLE** **UNI Naturel 26** Print pattern **MAELLIE Terracotta 65**

Heavy canvas fabric, the Siento recyclé is woven with mixed dyed yarns which gives this textured linen effect. The warp and weft are made with recycled polyester yarns. Usable as a printing support. Please note : the background can modify the coloristic rendering.

### Technical properties



Flame retardant



Thermal



Acoustic



Recycled fabrics

**Applications** Roman blinds - Panel curtains - Bedspreads - Valences - Seating - Bed runners - Curtains - Cushions

**Composition** 80% recycled polyester FR / 20% polyester FR

**Weight** 330 g/m<sup>2</sup>

**Width** 290 cm

**Fabric direction** Room high or standard direction

**Fitting** ↔ 32.0 cm ↓ 32.0 cm

**Maintenance advice**

**Label** France Terre Textile / OEKO-TEX STANDARD 100 Recyclé

**Minimum order** 25 linear(s) meter(s)

## Technical characteristics

|                 |   |
|-----------------|---|
| Flame retardant | M1 / B1 / IMO PASS / UNI 8456 / 9174 Classe Uno |
| Acoustic        | Noise reduction coefficient (NRC) : <b>0.73</b> |
| Optical index   | Light reflexion : <b>52 %</b>                   |
|                 | Light absorption : <b>40 %</b>                  |
|                 | Light transmission : <b>8 %</b>                 |
| Thermal index   | Solar reflexion : <b>61 %</b>                   |
|                 | Solar absorption : <b>24 %</b>                  |
|                 | Solar transmission : <b>15 %</b>                |
|                 | UV transmission : <b>3 %</b>                    |
|                 | Gtot : <b>Gt 37 % Fc 63 %</b>                   |
|                 | Resilience                                      |
|                 | Pilling <b>4-5</b>                              |
|                 | Dimensional Stability (%)                       |
|                 | Warp <b>-1,5</b>                                |
|                 | Weft <b>-1,5</b>                                |
|                 | Martindale (Cycles) <b>90000</b>                |
|                 | Breaking Elongation                             |
|                 | Warp <b>41</b>                                  |
|                 | Weft <b>44</b>                                  |
|                 | Breaking load (daN)                             |
|                 | Warp <b>180</b>                                 |
|                 | Weft <b>150</b>                                 |