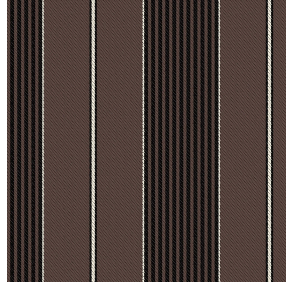




SKAILO Blanc 01  
Printing support



GUSTAVE Taupe 95  
Print pattern



Visual not taking into account the printing medium, the final rendering may vary according to the chosen medium.

## Printing support **SKAILO Blanc 01** Print pattern **GUSTAVE Taupe 95**

Our SKAILO quality is an artificial leather developed to be a print support. Its leather look is finely textured, its polyester/cotton textile base gives it flexibility. This reference is ideal for making headboards, seats and poufs thanks to its flexibility and good performance in terms of abrasion resistance. The SKAILO is customizable thanks to our new direct printing technology, dedicated to the treatment of this type of support, this technique guarantees an optimal definition of the patterns and the colors.

**Applications** Valences - Headboard

**Composition** poly-coton enduction polyuréthane

**Weight** 435 g/m<sup>2</sup>

**Width** 138 cm

**Fabric direction** Room high or standard direction

**Fitting** ↔ 14.0 cm ↓ 0.0 cm

**Maintenance advice**     

**Label**

**Minimum order** 35 linear(s) meter(s)

## Technical characteristics

Resilience

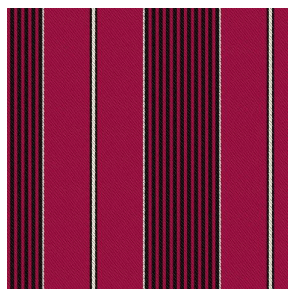
Lightfastness (units Class/8)

6

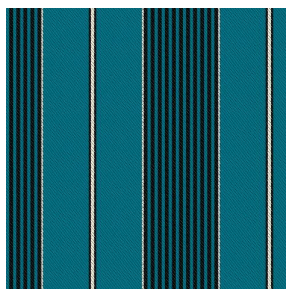
Martindale (Cycles)

50000

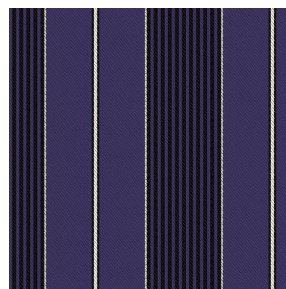
# Print pattern GUSTAVE



GUSTAVE Rubis 59



GUSTAVE Céladon 135



GUSTAVE Prune 84



(Headquarters) SOTEXPRO - 510 route de Montchal - 42360 PANISSIÈRES - FRANCE - +33 4 77 27 60 60

Non-contractual photos and colors - Indicative fitting - Fitting may vary depending on support selected