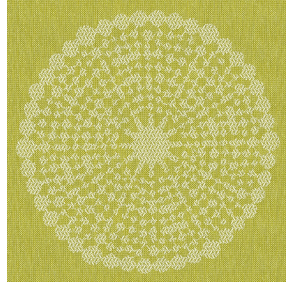




SOFTLINE Blanc 01  
Printing support



ANGELE Anis 62  
Print pattern



## Printing support **SOFTLINE Blanc 01** Print pattern **ANGELE Anis 62**

Light and soft canvas with peach skin touch, ideal for slightly filtering light into a room. The Softline can also be used as a lining to provide an extra finishing to your double-lined curtains.

### Technical properties



Flame retardant



Thermal

Applications Roman blinds - Panel curtains - Lining - Curtains


Composition 100% FR polyester

Weight 80 g/m<sup>2</sup>

Width 300 cm

Fabric direction Room high or standard direction

Fitting ↔ 30.0 cm ↓ 30.0 cm

Maintenance advice      

Label

Minimum order 25 linear(s) meter(s)



Visual not taking into account the printing medium, the final rendering may vary according to the chosen medium.

## Technical characteristics

Flame retardant

M1 / B1 / IMO PASS

Optical index

Light reflexion : 63 %

Light absorption : 5 %

Light transmission : 32 %

Thermal index

Solar reflexion : 63 %

Solar absorption : 5 %

Solar transmission : 32 %

UV transmission : 25 %

Gtot : Gt 37 % Fc 62 %

Resilience

Lightfastness (units Class/8) 6

Dimensional Stability (%)

Warp -0.5

Weft -0.5

Breaking Elongation

Warp 25

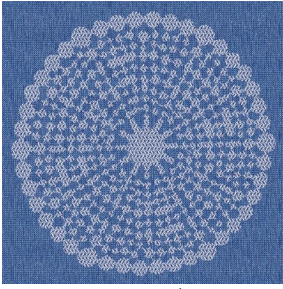
Weft 10

Breaking load (daN)

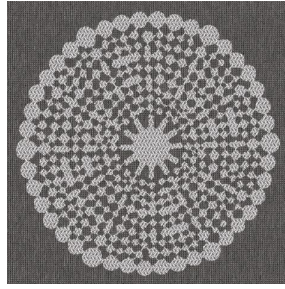
Warp 45

Weft 23

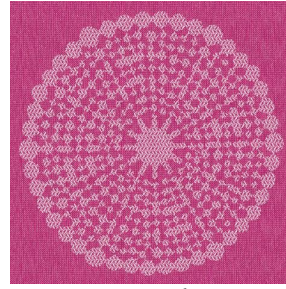
# Print pattern ANGELE



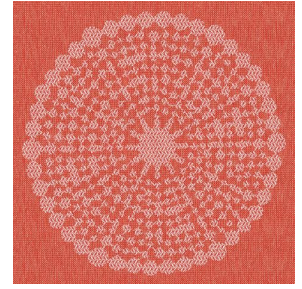
ANGELE Océan 91



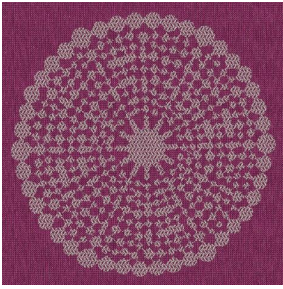
ANGELE Taupe 95



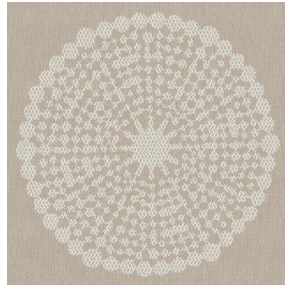
ANGELE Fuchsia 33



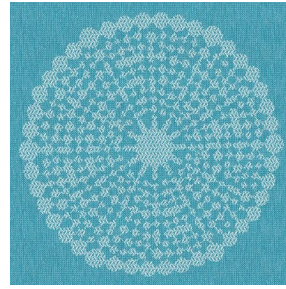
ANGELE Orange 15



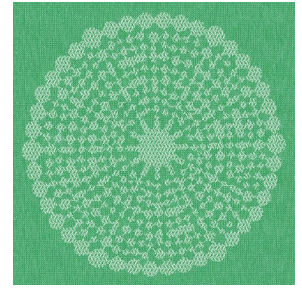
ANGELE Prune 84



ANGELE Sable 67



ANGELE Turquoise 53



ANGELE Vert 24



(Headquarters) SOTEXPRO - 510 route de Montchal - 42360 PANISSIÈRES - FRANCE - +33 4 77 27 60 60

*Non-contractual photos and colors - Indicative fitting - Fitting may vary depending on support selected*