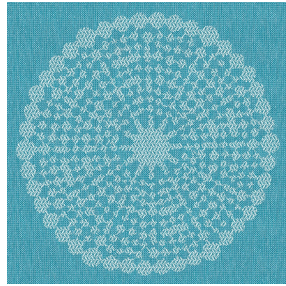




SOFTLINE Blanc 01
Printing support



ANGELE Turquoise 53
Print pattern



Printing support **SOFTLINE Blanc 01** Print pattern **ANGELE Turquoise 53**

Light and soft canvas with peach skin touch, ideal for slightly filtering light into a room. The Softline can also be used as a lining to provide an extra finishing to your double-lined curtains.

Technical properties



Flame retardant



Thermal

Applications Lining - Curtains - Roman blinds - Panel curtains

Composition 100% FR polyester

Weight 80 g/m²

Width 300 cm

Fabric direction Room high or standard direction

Fitting ↔ 30.0 cm ↓ 30.0 cm

Maintenance advice

Label

Minimum order 25 linear(s) meter(s)



Visual not taking into account the printing medium, the final rendering may vary according to the chosen medium.

Technical characteristics

Flame retardant

M1 / B1 / IMO PASS

Optical index

Light reflexion : 63 %

Light absorption : 5 %

Light transmission : 32 %

Thermal index

Solar reflexion : 63 %

Solar absorption : 5 %

Solar transmission : 32 %

UV transmission : 25 %

Gtot : Gt 37 % Fc 62 %

Resilience

Lightfastness (units Class/8) 6

Dimensional Stability (%)

Warp -0.5

Weft -0.5

Breaking Elongation

Warp 25

Weft 10

Breaking load (daN)

Warp 45

Weft 23

Print pattern ANGELE



ANGELE Océan 91



ANGELE Taupe 95



ANGELE Anis 62



ANGELE Fuchsia 33



ANGELE Orange 15



ANGELE Prune 84



ANGELE Sable 67



ANGELE Vert 24



(Headquarters) SOTEXPRO - 510 route de Montchal - 42360 PANISSIÈRES - FRANCE - +33 4 77 27 60 60

Non-contractual photos and colors - Indicative fitting - Fitting may vary depending on support selected