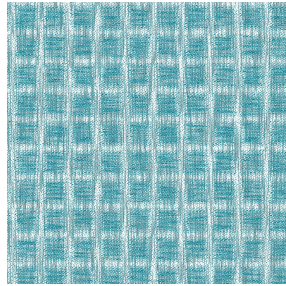




**SOFTLINE Blanc 01**  
Printing support



**ECUME Turquoise 53**  
Print pattern



## Printing support **SOFTLINE Blanc 01** Print pattern **ECUME Turquoise 53**

Light and soft canvas with peach skin touch, ideal for slightly filtering light into a room. The Softline can also be used as a lining to provide an extra finishing to your double-lined curtains.

### Technical properties



Flame retardant



Thermal

**Applications** Roman blinds - Panel curtains - Lining - Curtains

**Composition** 100% FR polyester

**Weight** 80 g/m<sup>2</sup>

**Width** 300 cm

**Fabric direction** Room high or standard direction

**Fitting** ↔ 20.0 cm ↓ 22.0 cm

**Maintenance advice**

**Label**

**Minimum order** 25 linear(s) meter(s)



Visual not taking into account the printing medium, the final rendering may vary according to the chosen medium.

## Technical characteristics

Flame retardant	M1 / B1 / IMO PASS		
Optical index	Light reflexion :	63 %	
	Light absorption :	5 %	
	Light transmission :	32 %	
Thermal index	Solar reflexion :	63 %	
	Solar absorption :	5 %	
	Solar transmission :	32 %	
	UV transmission :	25 %	
	Gtot :	Gt 37 % Fc 62 %	
Resilience	Lightfastness (units Class/8)	6	
	Dimensional Stability (%)	Warp	-0.5
		Weft	-0.5
	Breaking Elongation	Warp	25
		Weft	10
	Breaking load (daN)	Warp	45
		Weft	23

# Print pattern ECUME



ECUME Taupe 95



(Headquarters) SOTEXPRO - 510 route de Montchal - 42360 PANISSIÈRES - FRANCE - +33 4 77 27 60 60

Non-contractual photos and colors - Indicative fitting - Fitting may vary depending on support selected