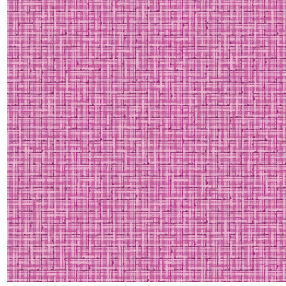




**SOFTLINE Blanc 01**  
Printing support



**SALIN Fuchsia 33**  
Print pattern



## Printing support **SOFTLINE Blanc 01** Print pattern **SALIN Fuchsia 33**

Light and soft canvas with peach skin touch, ideal for slightly filtering light into a room. The Softline can also be used as a lining to provide an extra finishing to your double-lined curtains.

### Technical properties



Flame retardant



Thermal

**Applications** Roman blinds - Panel curtains - Lining - Curtains

**Composition** 100% FR polyester

**Weight** 80 g/m<sup>2</sup>

**Width** 300 cm

**Fabric direction** Room high or standard direction

**Fitting** ↔ 0.0 cm ↓ 0.0 cm

**Maintenance advice**     

**Label**

**Minimum order** 25 linear(s) meter(s)



Visual not taking into account the printing medium, the final rendering may vary according to the chosen medium.

## Technical characteristics

Flame retardant	M1 / B1 / IMO PASS
Optical index	Light reflexion : <b>63 %</b>
	Light absorption : <b>5 %</b>
	Light transmission : <b>32 %</b>
Thermal index	Solar reflexion : <b>63 %</b>
	Solar absorption : <b>5 %</b>
	Solar transmission : <b>32 %</b>
	UV transmission : <b>25 %</b>
	Gtot : <b>Gt 37 % Fc 62 %</b>
Resilience	Lightfastness (units Class/8) <b>6</b>
	Dimensional Stability (%)
	Warp <b>-0.5</b>
	Weft <b>-0.5</b>
	Breaking Elongation
	Warp <b>25</b>
	Weft <b>10</b>
	Breaking load (daN)
Warp <b>45</b>	
Weft <b>23</b>	

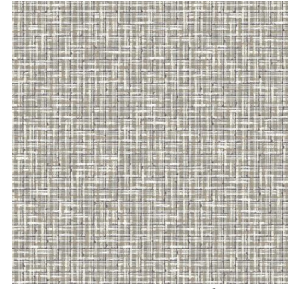
# Print pattern SALIN



SALIN Abricot 08



SALIN Anis 62



SALIN Naturel 26



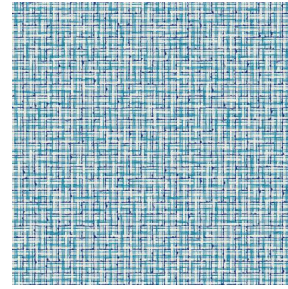
SALIN Océan 91



SALIN Orange 15



SALIN Rouge 21



SALIN Turquoise 53



SALIN Vert 24



(Headquarters) SOTEXPRO - 510 route de Montchal - 42360 PANISSIÈRES - FRANCE - +33 4 77 27 60 60

*Non-contractual photos and colors - Indicative fitting - Fitting may vary depending on support selected*