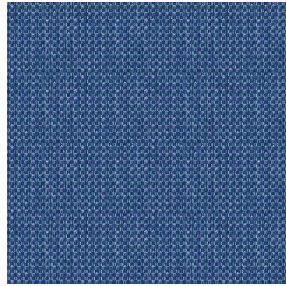




SOFTLINE Blanc 01
Printing support



RIVE Océan 91
Print pattern



Printing support **SOFTLINE Blanc 01** Print pattern **RIVE Océan 91**

Light and soft canvas with peach skin touch, ideal for slightly filtering light into a room. The Softline can also be used as a lining to provide an extra finishing to your double-lined curtains.

Technical properties



Flame retardant



Thermal

Applications Lining - Curtains - Roman blinds - Panel curtains


Composition 100% FR polyester

Weight 80 g/m²

Width 300 cm

Fabric direction Room high or standard direction

Fitting ↔ 0.0 cm ↓ 0.0 cm

Maintenance advice     

Label

Minimum order 25 linear(s) meter(s)



Visual not taking into account the printing medium, the final rendering may vary according to the chosen medium.

Technical characteristics

Flame retardant	M1 / B1 / IMO PASS		
Optical index	Light reflexion :	63 %	
	Light absorption :	5 %	
	Light transmission :	32 %	
Thermal index	Solar reflexion :	63 %	
	Solar absorption :	5 %	
	Solar transmission :	32 %	
	UV transmission :	25 %	
	Gtot :	Gt 37 % Fc 62 %	
Resilience	Lightfastness (units Class/8)	6	
	Dimensional Stability (%)	Warp	-0.5
		Weft	-0.5
	Breaking Elongation	Warp	25
		Weft	10
	Breaking load (daN)	Warp	45
		Weft	23

Print pattern RIVE



RIVE Fuchsia 33



RIVE Bleu 41



RIVE Jaune 46



RIVE Turquoise 53



RIVE Sable 67



RIVE Taupe 95



RIVE Gris 97



(Headquarters) SOTEXPRO - 510 route de Montchal - 42360 PANISSIÈRES - FRANCE - +33 4 77 27 60 60
(Showroom) Le LAB' SOTEXPRO - 4 rue du Mail - 75002 PARIS - FRANCE

Non-contractual photos and colors - Indicative fitting - Fitting may vary depending on support selected