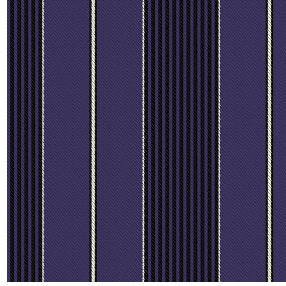




SOFTLINE Blanc 01
Printing support



GUSTAVE Prune 84
Print pattern



Visual not taking into account the printing medium, the final rendering may vary according to the chosen medium.

Printing support **SOFTLINE Blanc 01** Print pattern **GUSTAVE Prune 84**

Light and soft canvas with peach skin touch, ideal for slightly filtering light into a room. The Softline can also be used as a lining - provide an extra finishing to your double-lined curtains.

Technical properties



Flame retardant



Thermal

Applications Roman blinds - Panel curtains - Lining - Curtains

Composition 100% FR polyester

Weight 80 g/m²

Width 300 cm

Fabric direction Room high or standard direction

Fitting ↔ 14.0 cm ↓ 0.0 cm

Maintenance advice      

Label

Minimum order 25 linear(s) meter(s)

Technical characteristics

Flame retardant	M1 / B1 / IMO PASS	
Optical index	Light reflexion :	63 %
	Light absorption :	5 %
	Light transmission :	32 %
Thermal index	Solar reflexion :	63 %
	Solar absorption :	5 %
	Solar transmission :	32 %
	UV transmission :	25 %
	Gtot :	Gt 37 % Fc 62 %
Resilience	Lightfastness (units Class/8)	6
	Dimensional Stability (%)	
	Warp	-0.5
	Weft	-0.5
	Breaking Elongation	
	Warp	25
	Weft	10
	Breaking load (daN)	
Warp	45	
Weft	23	

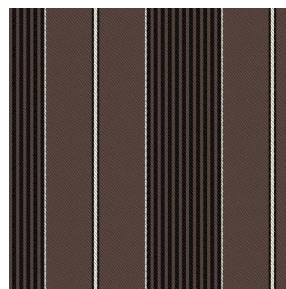
Print pattern GUSTAVE



GUSTAVE Rubis 59



GUSTAVE Céladon 135



GUSTAVE Taupe 95



(Headquarters) SOTEXPRO - 510 route de Montchal - 42360 PANISSIÈRES - FRANCE - +33 4 77 27 60 60

Non-contractual photos and colors - Indicative fitting - Fitting may vary depending on support selected