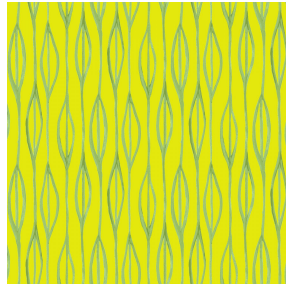


SOFTLINE Blanc 01  
Printing support



YENDI Anis 62  
Print pattern



Visual not taking into account the printing medium, the final rendering may vary according to the chosen medium.

## Printing support **SOFTLINE Blanc 01** Print pattern **YENDI Anis 62**

Light and soft canvas with peach skin touch, ideal for slightly filtering light into a room. The Softline can also be used as a lining to provide an extra finishing to your double-lined curtains.

### Technical properties



Flame retardant



Thermal

Applications Roman blinds - Panel curtains - Lining - Curtains

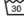

Composition 100% FR polyester

Weight 80 g/m<sup>2</sup>

Width 300 cm

Fabric direction Room high or standard direction

Fitting ↔ 24.0 cm ↓ 20.0 cm

Maintenance advice     

Label

Minimum order 25 linear(s) meter(s)

## Technical characteristics

Flame retardant	M1 / B1 / IMO PASS	
Optical index	Light reflexion : 63 %	
	Light absorption : 5 %	
	Light transmission : 32 %	
Thermal index	Solar reflexion : 63 %	
	Solar absorption : 5 %	
	Solar transmission : 32 %	
	UV transmission : 25 %	
	Gtot :	Gt 37 % Fc 62 %
	Resilience	Lightfastness (units Class/8) 6
Dimensional Stability (%)		Warp -0.5
		Weft -0.5
Breaking Elongation		Warp 25
		Weft 10
Breaking load (daN)		Warp 45
		Weft 23

# Print pattern YENDI



YENDI Lagon 110



YENDI Lilas 19



YENDI Opéra 104



YENDI Pacifique 54



YENDI Sapin 126



YENDI Sanguine 05



YENDI Soleil 127



YENDI Terre 107



(Headquarters) SOTEXPRO - 510 route de Montchal - 42360 PANISSIÈRES - FRANCE - +33 4 77 27 60 60

*Non-contractual photos and colors - Indicative fitting - Fitting may vary depending on support selected*