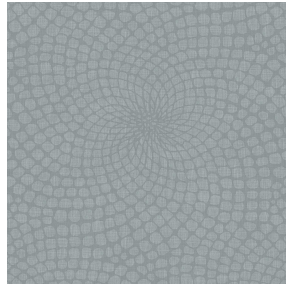




SOFTLINE Blanc 01
Printing support



MELODY Acier 18
Print pattern



Printing support **SOFTLINE Blanc 01** Print pattern **MELODY Acier 18**

Light and soft canvas with peach skin touch, ideal for slightly filtering light into a room. The Softline can also be used as a lining to provide an extra finishing to your double-lined curtains.

Technical properties



Flame retardant



Thermal

Applications Roman blinds - Panel curtains - Lining - Curtains

Composition 100% FR polyester

Weight 80 g/m²

Width 300 cm

Fabric direction Room high or standard direction

Fitting ↔ 0.0 cm ↓ 0.0 cm

Maintenance advice      

Label

Minimum order 25 linear(s) meter(s)



Visual not taking into account the printing medium, the final rendering may vary according to the chosen medium.

Technical characteristics

Flame retardant

M1 / B1 / IMO PASS

Optical index

Light reflexion : **63 %**

Light absorption : **5 %**

Light transmission : **32 %**

Thermal index

Solar reflexion : **63 %**

Solar absorption : **5 %**

Solar transmission : **32 %**

UV transmission : **25 %**

Gtot : **Gt 37 % Fc 62 %**

Resilience

Lightfastness (units Class/8) **6**

Dimensional Stability (%)

Warp **-0.5**

Weft **-0.5**

Breaking Elongation

Warp **25**

Weft **10**

Breaking load (daN)

Warp **45**

Weft **23**

Print pattern MELODY



MELODY Vanille 51



MELODY Fuchsia 33



MELODY Naturel 26



MELODY Anis 62



MELODY Lin 11



MELODY Orange 15



MELODY Ficelle 09



MELODY Turquoise 53



(Headquarters) SOTEXPRO - 510 route de Montchal - 42360 PANISSIÈRES - FRANCE - +33 4 77 27 60 60
(Showroom) Le LAB' SOTEXPRO - 4 rue du Mail - 75002 PARIS - FRANCE

Non-contractual photos and colors - Indicative fitting - Fitting may vary depending on support selected