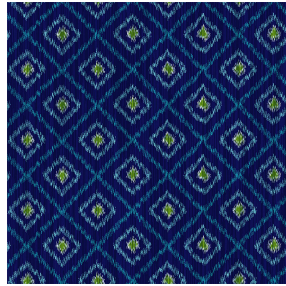




SOFTLINE Blanc 01
Printing support



HAMPI Bleu 41
Print pattern



Visual not taking into account the printing medium, the final rendering may vary according to the chosen medium.

Printing support **SOFTLINE Blanc 01** Print pattern **HAMPI Bleu 41**

Light and soft canvas with peach skin touch, ideal for slightly filtering light into a room. The Softline can also be used as a lining to provide an extra finishing to your double-lined curtains.

Technical properties



Flame retardant



Thermal

Applications Roman blinds - Panel curtains - Lining - Curtains

Composition 100% FR polyester

Weight 80 g/m²

Width 300 cm

Fabric direction Room high or standard direction

Fitting ↔ 28.0 cm ↓ 28.0 cm

Maintenance advice

Label

Minimum order 25 linear(s) meter(s)

Technical characteristics

Flame retardant	M1 / B1 / IMO PASS
Optical index	Light reflexion : 63 %
	Light absorption : 5 %
	Light transmission : 32 %
Thermal index	Solar reflexion : 63 %
	Solar absorption : 5 %
	Solar transmission : 32 %
	UV transmission : 25 %
	Gtot : Gt 37 % Fc 62 %
Resilience	Lightfastness (units Class/8) 6
	Dimensional Stability (%)
	Warp -0.5
	Weft -0.5
	Breaking Elongation
	Warp 25
	Weft 10
Breaking load (daN)	
Warp 45	
Weft 23	