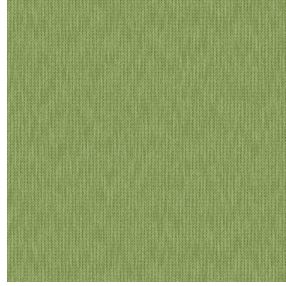


SOFTLINE Blanc 01  
Printing support



CALI Lierre 24  
Print pattern

## Printing support **SOFTLINE Blanc 01** Print pattern **CALI Lierre 24**

Light and soft canvas with peach skin touch, ideal for slightly filtering light into a room. The Softline can also be used as a lining to provide an extra finishing to your double-lined curtains.

### Technical properties



Flame retardant



Thermal

**Applications** Roman blinds - Panel curtains - Lining - Curtains

**Composition** 100% FR polyester

**Weight** 80 g/m<sup>2</sup>

**Width** 300 cm

**Fabric direction** Room high or standard direction

**Fitting** ↔ 33.0 cm ↓ 33.0 cm

**Maintenance advice**

**Label**

**Minimum order** 25 linear(s) meter(s)



Visual not taking into account the printing medium, the final rendering may vary according to the chosen medium.

## Technical characteristics

Flame retardant	M1 / B1 / IMO PASS	
Optical index	Light reflexion :	63 %
	Light absorption :	5 %
	Light transmission :	32 %
Thermal index	Solar reflexion :	63 %
	Solar absorption :	5 %
	Solar transmission :	32 %
	UV transmission :	25 %
	Gtot :	Gt 37 % Fc 62 %
Resilience	Lightfastness (units Class/8)	6
	Dimensional Stability (%)	
	Warp	-0.5
	Weft	-0.5
	Breaking Elongation	
	Warp	25
	Weft	10
	Breaking load (daN)	
	Warp	45
Weft	23	

## Print pattern CALI



CALI Orange 15



CALI Terracotta 65



CALI Jade 116



CALI Soleil 127



CALI Etang 165



CALI Naturel 26



(Headquarters) SOTEXPRO - 510 route de Montchal - 42360 PANISSIÈRES - FRANCE - +33 4 77 27 60 60

Non-contractual photos and colors - Indicative fitting - Fitting may vary depending on support selected