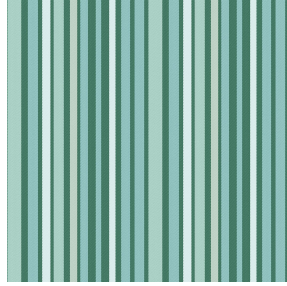




SOLLY BPI 00  
Printing support



LUKE Reflet 140  
Print pattern



## Printing support **SOLLY BPI 00** Print pattern **LUKE Reflet 140**

Textured Printing base fabric. the linen look weft creates a light irregular texture which allows it to be easily printed by transfer sublimation.

### Technical properties



Flame retardant

**Applications** Roman blinds - Panel curtains - Curtains

**Composition** 50% polyester FR recyclé/50% polyester FR

**Weight** 240 g/m<sup>2</sup>

**Width** 280 cm

**Fabric direction** Room High Direction

**Fitting** ↔ 30.0 cm ↓ 30.0 cm

**Maintenance advice**

**Label** France Terre Textile / OEKO-TEX STANDARD 100 Recyclé

**Minimum order** 1 linear(s) meter(s)



Visual not taking into account the printing medium, the final rendering may vary according to the chosen medium.

## Technical characteristics

Flame retardant

M1 / B1 / UNI 8456 / 9174 Classe Uno

Resilience

|                               |       |
|-------------------------------|-------|
| Lightfastness (units Class/8) | 4     |
| Pilling                       | 3     |
| Dimensional Stability (%)     |       |
| Warp                          | -3    |
| Weft                          | -1    |
| Martindale (Cycles)           | 25000 |
| Breaking Elongation           |       |
| Warp                          | 36    |
| Weft                          | 36    |
| Breaking load (daN)           |       |
| Warp                          | 170   |
| Weft                          | 60    |