



SOLLY BPI 00
Printing support



SCOURTIN Gris 97
Print pattern



Printing support **SOLLY BPI 00** Print pattern **SCOURTIN Gris 97**

Textured Printing base fabric. the linen look weft creates a light irregular texture which allows it to be easily printed by transfer sublimation.

Technical properties



Flame retardant

Applications Roman blinds - Panel curtains - Curtains

Composition 50% polyester FR recyclé/50% polyester FR

Weight 240 g/m²

Width 280 cm

Fabric direction Room High Direction

Fitting ↔ cm ↓ cm

Maintenance advice     

Label France Terre Textile / OEKO-TEX STANDARD 100 Recyclé

Minimum order 25 linear(s) meter(s)



Visual not taking into account the printing medium, the final rendering may vary according to the chosen medium.

Technical characteristics

Flame retardant

M1 / B1 / UNI 8456 / 9174 Classe Uno

Resilience

Lightfastness (units Class/8)	4
Pilling	3
Dimensional Stability (%)	
Warp	-3
Weft	-1
Martindale (Cycles)	25000
Breaking Elongation	
Warp	36
Weft	36
Breaking load (daN)	
Warp	170
Weft	60

Print pattern SCOURTIN



SCOURTIN Beige 63



SCOURTIN Fuchsia 33



SCOURTIN Sapin 126



SCOURTIN Bergamote
121



SCOURTIN Anthracite
38



SCOURTIN Violine 105



SCOURTIN Pacifique 54



SCOURTIN Rose 129



SCOURTIN Blanc 01



SCOURTIN Lin 11



SCOURTIN Naturel 26



SCOURTIN Citrouille
136



SCOURTIN Turquoise 53



SCOURTIN Brun 23



SCOURTIN Hortensia
134



SCOURTIN Orage 123



SCOURTIN Rubis 59



SCOURTIN Ficelle 09



SCOURTIN Maïs 37



SCOURTIN Céladon 135



(Headquarters) SOTEXPRO - 510 route de Montchal - 42360 PANISSIÈRES - FRANCE - +33 4 77 27 60 60
(Showroom) Le LAB' SOTEXPRO - 4 rue du Mail - 75002 PARIS - FRANCE

Non-contractual photos and colors - Indicative fitting - Fitting may vary depending on support selected

Print pattern SCOURTIN



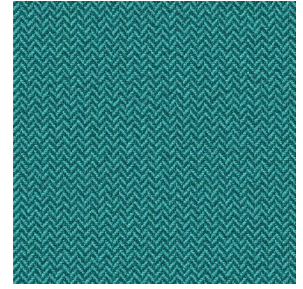
SCOURTIN Ebene 113



SCOURTIN Tourterelle
138



SCOURTIN Titanium 98



SCOURTIN Lagon 110



(Headquarters) SOTEXPRO - 510 route de Montchal - 42360 PANISSIÈRES - FRANCE - +33 4 77 27 60 60
(Showroom) Le LAB' SOTEXPRO - 4 rue du Mail - 75002 PARIS - FRANCE

Non-contractual photos and colors - Indicative fitting - Fitting may vary depending on support selected