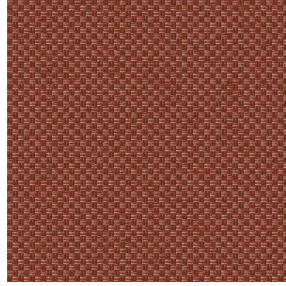




SOLLY BPI 00
Printing support



CHARLOTTE Sienne 29
Print pattern



Printing support **SOLLY BPI 00** Print pattern **CHARLOTTE Sienne 29**

Textured Printing base fabric. the linen look weft creates a light irregular texture which allows it to be easily printed by transfer sublimation.

Technical properties



Flame retardant

Applications Roman blinds - Panel curtains - Curtains

Composition 50% polyester FR recyclé/50% polyester FR

Weight 240 g/m²

Width 280 cm

Fabric direction Room High Direction

Fitting ↔ 0.0 cm ↓ 0.0 cm

Maintenance advice     

Label France Terre Textile / OEKO-TEX STANDARD 100 Recyclé

Minimum order 25 linear(s) meter(s)



Visual not taking into account the printing medium, the final rendering may vary according to the chosen medium.

Technical characteristics

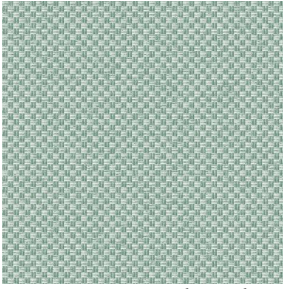
Flame retardant

M1 / B1 / UNI 8456 / 9174 Classe Uno

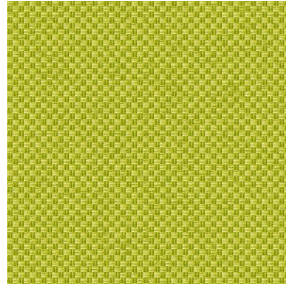
Resilience

Lightfastness (units Class/8)	4
Pilling	3
Dimensional Stability (%)	
Warp	-3
Weft	-1
Martindale (Cycles)	25000
Breaking Elongation	
Warp	36
Weft	36
Breaking load (daN)	
Warp	170
Weft	60

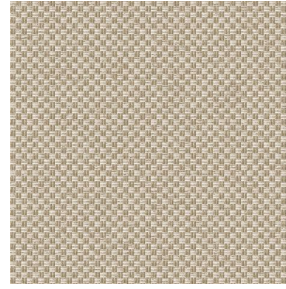
Print pattern CHARLOTTE



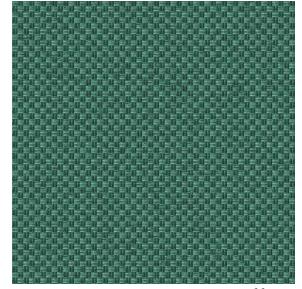
CHARLOTTE Absinthe
132



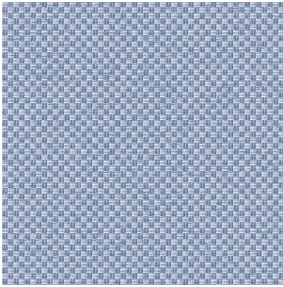
CHARLOTTE Anis 62



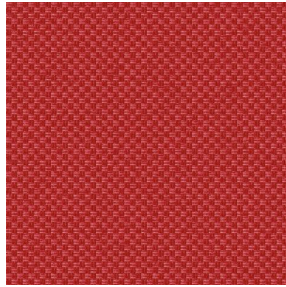
CHARLOTTE Beige 63



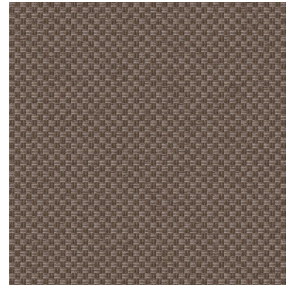
CHARLOTTE Bouteille
101



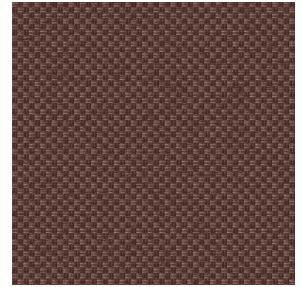
CHARLOTTE Brume 47



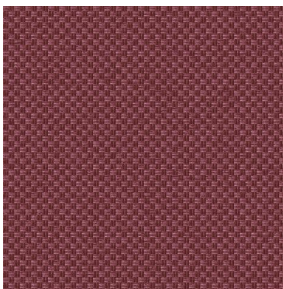
CHARLOTTE Cerise 66



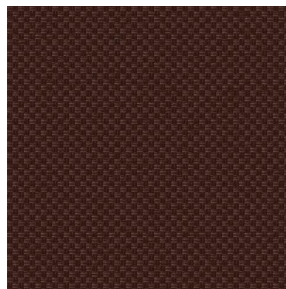
CHARLOTTE Chamois
111



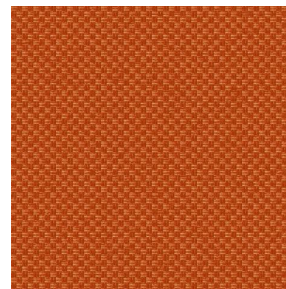
CHARLOTTE Chataigne
55



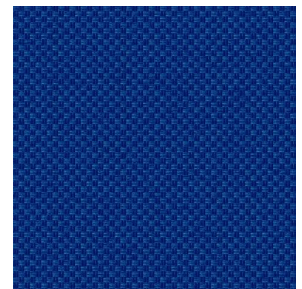
CHARLOTTE Chaudron
118



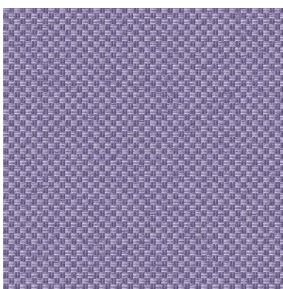
CHARLOTTE Chocolat
70



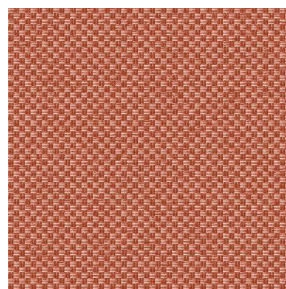
CHARLOTTE Citrouille
136



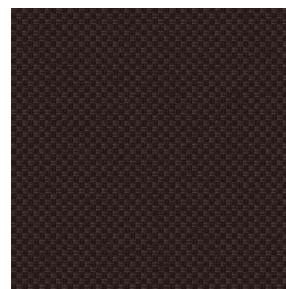
CHARLOTTE Cobalt 114



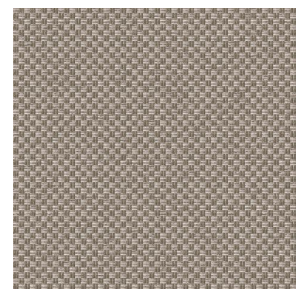
CHARLOTTE Crepuscule
45



CHARLOTTE Cuivre 50



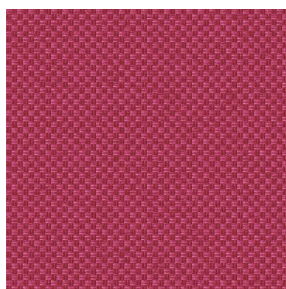
CHARLOTTE Ebene 124



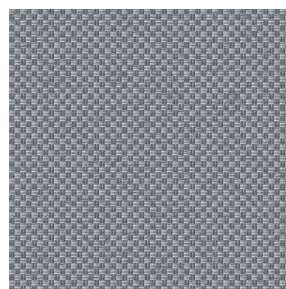
CHARLOTTE Ficelle 09



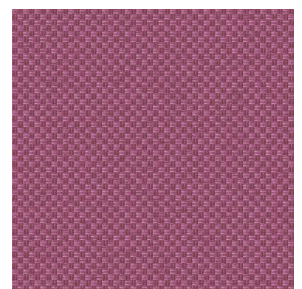
CHARLOTTE Fiesta 131



CHARLOTTE Grenat 56



CHARLOTTE Gris 97



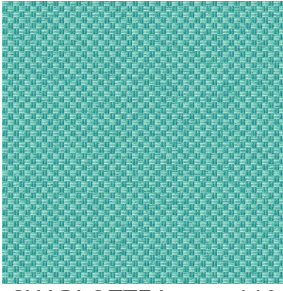
CHARLOTTE Hortensia
134



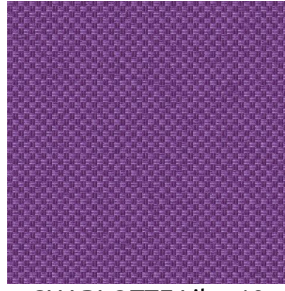
(Headquarters) SOTEXPRO - 510 route de Montchal - 42360 PANISSIÈRES - FRANCE - +33 4 77 27 60 60
(Showroom) Le LAB' SOTEXPRO - 4 rue du Mail - 75002 PARIS - FRANCE

Non-contractual photos and colors - Indicative fitting - Fitting may vary depending on support selected

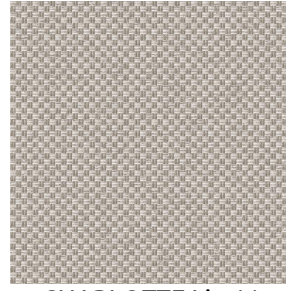
Print pattern CHARLOTTE



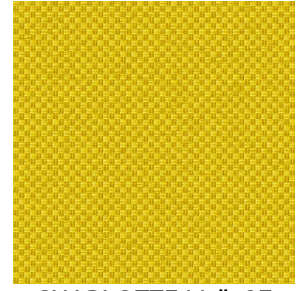
CHARLOTTE Lagon 110



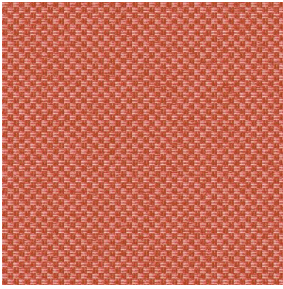
CHARLOTTE Lilas 19



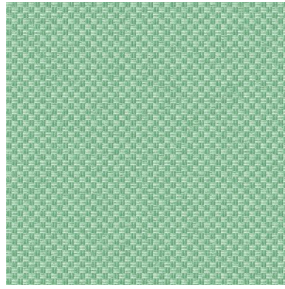
CHARLOTTE Lin 11



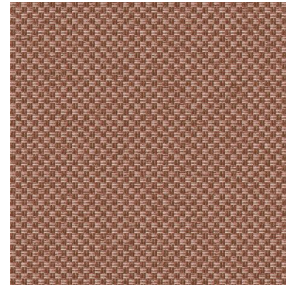
CHARLOTTE Maïs 37



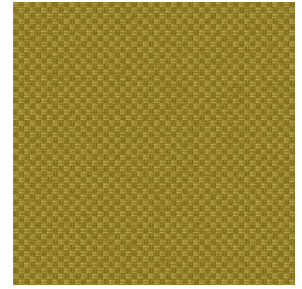
CHARLOTTE Melon 22



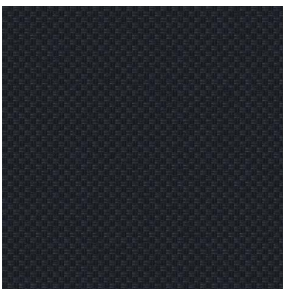
CHARLOTTE Menthe
122



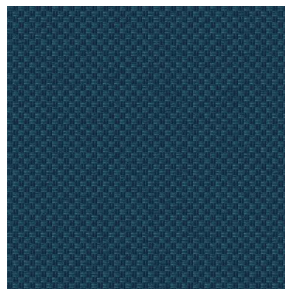
CHARLOTTE Mordore
133



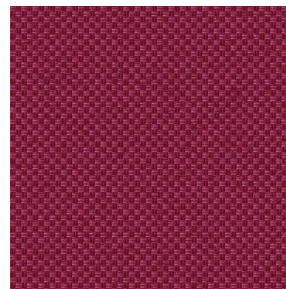
CHARLOTTE Mousse 92



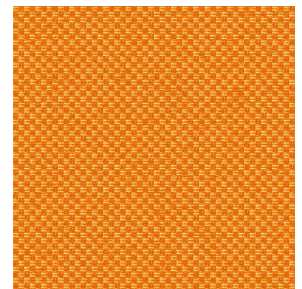
CHARLOTTE Noir 10



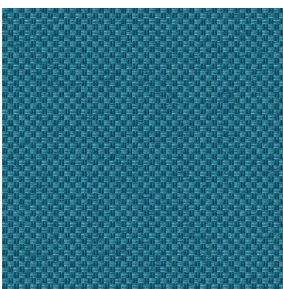
CHARLOTTE Océan 91



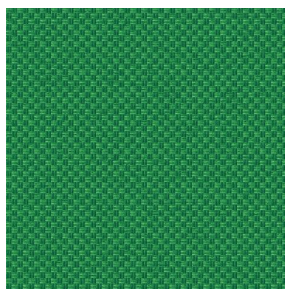
CHARLOTTE Opéra 104



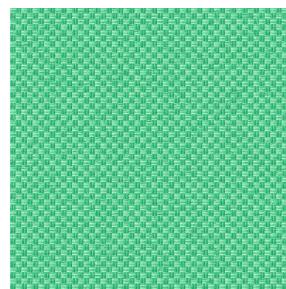
CHARLOTTE Orange 15



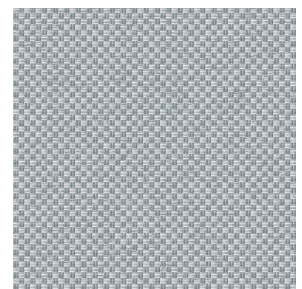
CHARLOTTE Pacifique
54



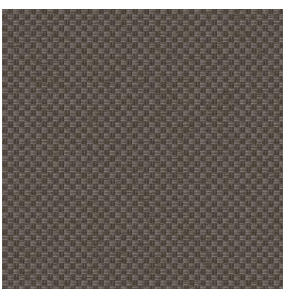
CHARLOTTE Prairie 125



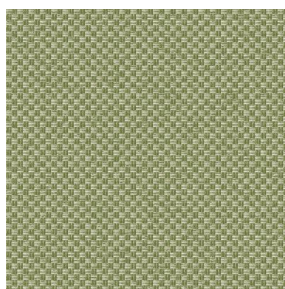
CHARLOTTE Printemps
130



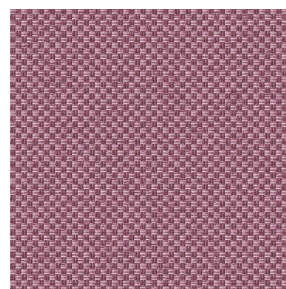
CHARLOTTE Souris 31



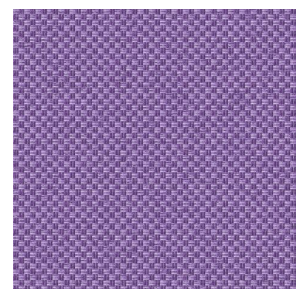
CHARLOTTE Terre 107



CHARLOTTE Tilleul 103



CHARLOTTE Vieux rose
64



CHARLOTTE Violine 105



(Headquarters) SOTEXPRO - 510 route de Montchal - 42360 PANISSIÈRES - FRANCE - +33 4 77 27 60 60
(Showroom) Le LAB' SOTEXPRO - 4 rue du Mail - 75002 PARIS - FRANCE

Non-contractual photos and colors - Indicative fitting - Fitting may vary depending on support selected