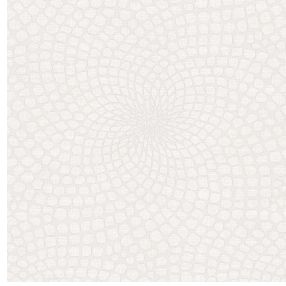




**SOLLY BPI 00**  
Printing support



**MELODY Naturel 26**  
Print pattern



## Printing support **SOLLY BPI 00** Print pattern **MELODY Naturel 26**

Textured Printing base fabric. the linen look weft creates a light irregular texture which allows it to be easily printed by transfer sublimation.

### Technical properties



Flame retardant

**Applications** Roman blinds - Panel curtains - Curtains

**Composition** 50% polyester FR recyclé/50% polyester FR

**Weight** 240 g/m<sup>2</sup>

**Width** 280 cm

**Fabric direction** Room High Direction

**Fitting** ↔ 0.0 cm ↓ 0.0 cm

**Maintenance advice**     

**Label** France Terre Textile / OEKO-TEX STANDARD 100 Recyclé

**Minimum order** 25 linear(s) meter(s)



Visual not taking into account the printing medium, the final rendering may vary according to the chosen medium.

## Technical characteristics

Flame retardant

M1 / B1 / UNI 8456 / 9174 Classe Uno

Resilience

Lightfastness (units Class/8)	<b>4</b>
Pilling	<b>3</b>
Dimensional Stability (%)	
Warp	<b>-3</b>
Weft	<b>-1</b>
Martindale (Cycles)	<b>25000</b>
Breaking Elongation	
Warp	<b>36</b>
Weft	<b>36</b>
Breaking load (daN)	
Warp	<b>170</b>
Weft	<b>60</b>

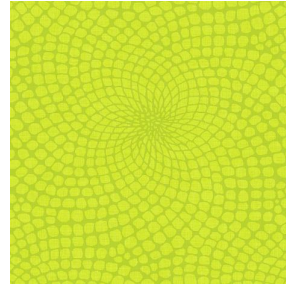
# Print pattern MELODY



MELODY Vanille 51



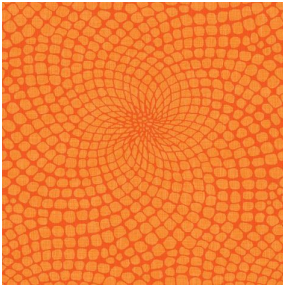
MELODY Fuchsia 33



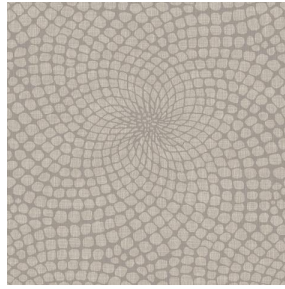
MELODY Anis 62



MELODY Lin 11



MELODY Orange 15



MELODY Ficelle 09



MELODY Turquoise 53



MELODY Acier 18



(Headquarters) SOTEXPRO - 510 route de Montchal - 42360 PANISSIÈRES - FRANCE - +33 4 77 27 60 60  
(Showroom) Le LAB' SOTEXPRO - 4 rue du Mail - 75002 PARIS - FRANCE

*Non-contractual photos and colors - Indicative fitting - Fitting may vary depending on support selected*