



**SOLLY BPI 00**  
Printing support



**GUSTAVE Rubis 59**  
Print pattern



## Printing support **SOLLY BPI 00** Print pattern **GUSTAVE Rubis 59**

Textured Printing base fabric. the linen look weft creates a light irregular texture which allows it to be easily printed by transfer sublimation.

### Technical properties



Flame retardant

**Applications** Roman blinds - Panel curtains - Curtains

**Composition** 50% polyester FR recyclé/50% polyester FR

**Weight** 240 g/m<sup>2</sup>

**Width** 280 cm

**Fabric direction** Room High Direction

**Fitting** ↔ 14.0 cm ↓ 0.0 cm

**Maintenance advice**     

**Label** France Terre Textile / OEKO-TEX STANDARD 100 Recyclé

**Minimum order** 25 linear(s) meter(s)



Visual not taking into account the printing medium, the final rendering may vary according to the chosen medium.

## Technical characteristics

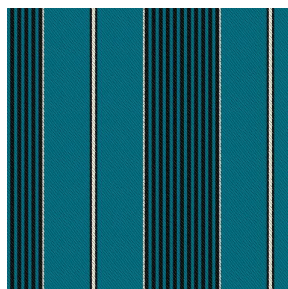
Flame retardant

M1 / B1 / UNI 8456 / 9174 Classe Uno

Resilience

|                               |              |
|-------------------------------|--------------|
| Lightfastness (units Class/8) | <b>4</b>     |
| Pilling                       | <b>3</b>     |
| Dimensional Stability (%)     |              |
| Warp                          | <b>-3</b>    |
| Weft                          | <b>-1</b>    |
| Martindale (Cycles)           | <b>25000</b> |
| Breaking Elongation           |              |
| Warp                          | <b>36</b>    |
| Weft                          | <b>36</b>    |
| Breaking load (daN)           |              |
| Warp                          | <b>170</b>   |
| Weft                          | <b>60</b>    |

## Print pattern GUSTAVE



GUSTAVE Céladon 135



GUSTAVE Prune 84



GUSTAVE Taupe 95



(Headquarters) SOTEXPRO - 510 route de Montchal - 42360 PANISSIÈRES - FRANCE - +33 4 77 27 60 60  
(Showroom) Le LAB' SOTEXPRO - 4 rue du Mail - 75002 PARIS - FRANCE

Non-contractual photos and colors - Indicative fitting - Fitting may vary depending on support selected