



SOLLY BPI 00
Printing support



ANGELE Vert 24
Print pattern



Printing support **SOLLY BPI 00** Print pattern **ANGELE Vert 24**

Textured Printing base fabric. the linen look weft creates a light irregular texture which allows it to be easily printed by transfer sublimation.

Technical properties



Flame retardant

Applications Roman blinds - Panel curtains - Curtains

Composition 50% polyester FR recyclé/50% polyester FR

Weight 240 g/m²

Width 280 cm

Fabric direction Room High Direction

Fitting ↔ 30.0 cm ↓ 30.0 cm

Maintenance advice     

Label France Terre Textile / OEKO-TEX STANDARD 100 Recyclé

Minimum order 25 linear(s) meter(s)



Visual not taking into account the printing medium, the final rendering may vary according to the chosen medium.

Technical characteristics

Flame retardant

M1 / B1 / UNI 8456 / 9174 Classe Uno

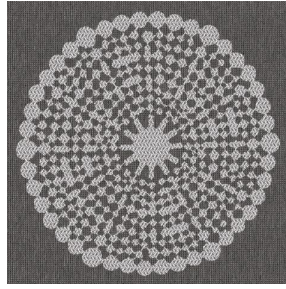
Resilience

Lightfastness (units Class/8)	4
Pilling	3
Dimensional Stability (%)	
Warp	-3
Weft	-1
Martindale (Cycles)	25000
Breaking Elongation	
Warp	36
Weft	36
Breaking load (daN)	
Warp	170
Weft	60

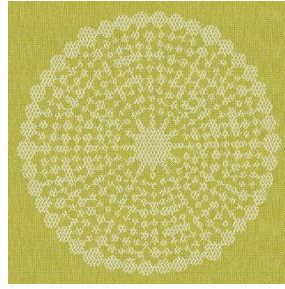
Print pattern ANGELE



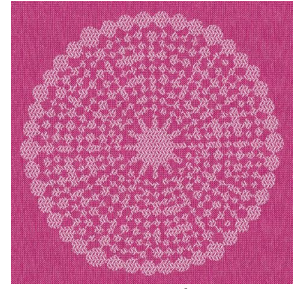
ANGELE Océan 91



ANGELE Taupe 95



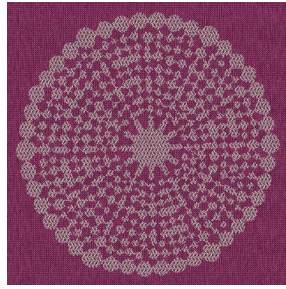
ANGELE Anis 62



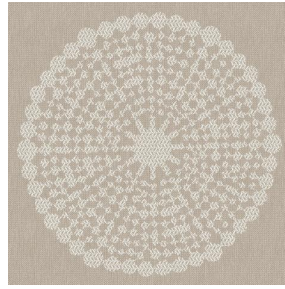
ANGELE Fuchsia 33



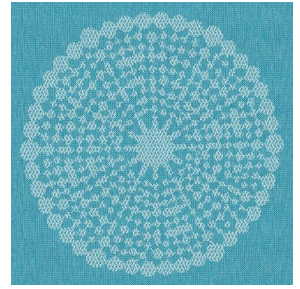
ANGELE Orange 15



ANGELE Prune 84



ANGELE Sable 67



ANGELE Turquoise 53



(Headquarters) SOTEXPRO - 510 route de Montchal - 42360 PANISSIÈRES - FRANCE - +33 4 77 27 60 60
(Showroom) Le LAB' SOTEXPRO - 4 rue du Mail - 75002 PARIS - FRANCE

Non-contractual photos and colors - Indicative fitting - Fitting may vary depending on support selected