



SOLLY BPI 00
Printing support



SONG Agrume 69
Print pattern



Printing support **SOLLY BPI 00** Print pattern **SONG Agrume 69**

Textured Printing base fabric. the linen look weft creates a light irregular texture which allows it to be easily printed by transfer sublimation.

Technical properties



Flame retardant

Applications Roman blinds - Panel curtains - Curtains

Composition 50% polyester FR recyclé/50% polyester FR

Weight 240 g/m²

Width 280 cm

Fabric direction Room High Direction

Fitting ↔ 35.0 cm ↓ 35.0 cm

Maintenance advice     

Label France Terre Textile / OEKO-TEX STANDARD 100 Recyclé

Minimum order 25 linear(s) meter(s)



Visual not taking into account the printing medium, the final rendering may vary according to the chosen medium.

Technical characteristics

Flame retardant

M1 / B1 / UNI 8456 / 9174 Classe Uno

Resilience

Lightfastness (units Class/8)	4
Pilling	3
Dimensional Stability (%)	
Warp	-3
Weft	-1
Martindale (Cycles)	25000
Breaking Elongation	
Warp	36
Weft	36
Breaking load (daN)	
Warp	170
Weft	60

Print pattern SONG



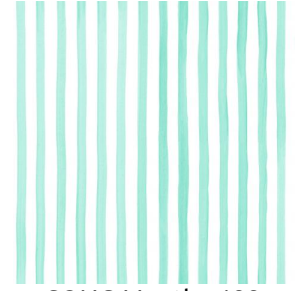
SONG Opéra 104



SONG Framboise 81



SONG Lierre 124



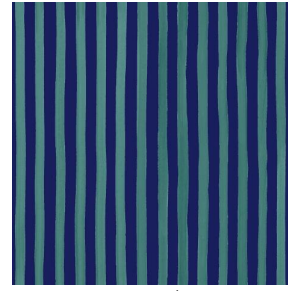
SONG Menthe 122



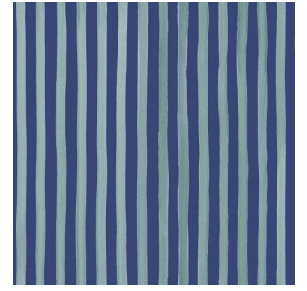
SONG Naturel 26



SONG Navy 120



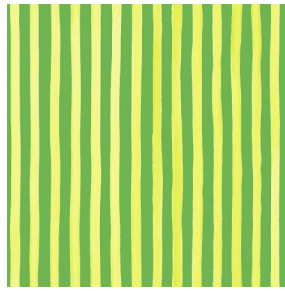
SONG Océan 91



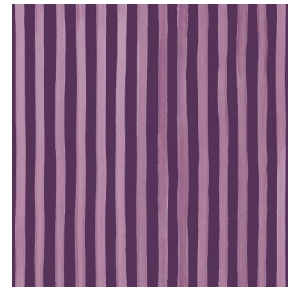
SONG Orage 123



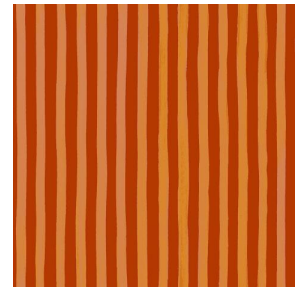
SONG Orange 15



SONG Prairie 125



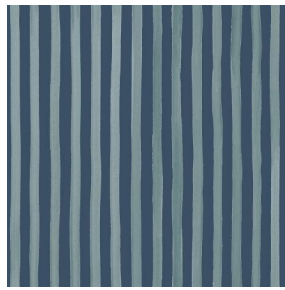
SONG Prune 84



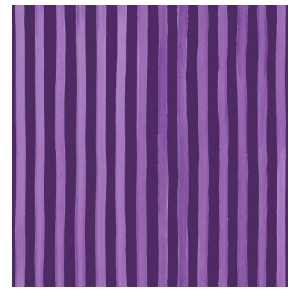
SONG Sanguine 05



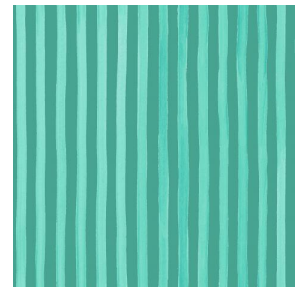
SONG Soleil 127



SONG Titanium 98



SONG Violine 105



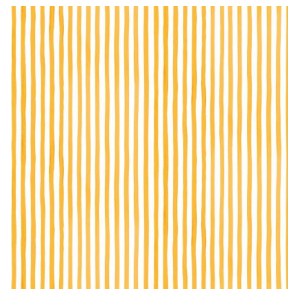
SONG Jade 116



SONG Sapin 126



SONG Tilleul 103



SONG maïs 37



sotexpro

(Headquarters) SOTEXPRO - 510 route de Montchal - 42360 PANISSIÈRES - FRANCE - +33 4 77 27 60 60
(Showroom) Le LAB' SOTEXPRO - 4 rue du Mail - 75002 PARIS - FRANCE

Non-contractual photos and colors - Indicative fitting - Fitting may vary depending on support selected