



TAO BPI 00
Printing support



MURA GLACIER 43
Print pattern

Printing support **TAO BPI 00** Print pattern **MURA GLACIER 43**

Unclassified velvet print support with acrylic coating

Applications Roman blinds - Panel curtains - Curtains

Composition 100% ungraded polyester

Weight 465 g/m²

Width 132 cm

Fabric direction Standard Direction

Fitting ↔ 13.0 cm ↓ 13.0 cm

Maintenance advice     

Label

Minimum order 25 linear(s) meter(s)



Visual not taking into account the printing medium, the final rendering may vary according to the chosen medium.

Technical characteristics

Resilience

Lightfastness (units Class/8)

5

Pilling

5

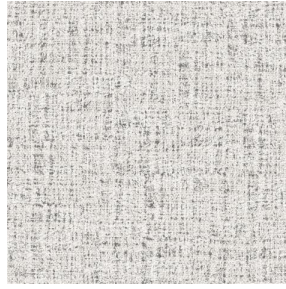
Martindale (Cycles)

60000

Print pattern MURA



MURA NOIR 10



MURA MASTIC 48



MURA GRENAT 56



MURA OLIVE 61



MURA SAPHIR 106



MURA TERRE 107



MURA ROSE 129



MURA MINERAL 157



MURA DUNE 170



MURA ETAIN 180



MURA SAVANE 185



(Headquarters) SOTEXPRO - 510 route de Montchal - 42360 PANISSIÈRES - FRANCE - +33 4 77 27 60 60
(Showroom) Le LAB' SOTEXPRO - 4 rue du Mail - 75002 PARIS - FRANCE

Non-contractual photos and colors - Indicative fitting - Fitting may vary depending on support selected