



TAO BPI 00
Printing support



SALIN Naturel 26
Print pattern



Printing support **TAO BPI 00** Print pattern **SALIN Naturel 26**

Unclassified velvet print support with acrylic coating

Applications Roman blinds - Panel curtains - Curtains

Composition 100% ungraded polyester

Weight 465 g/m²

Width 132 cm

Fabric direction Standard Direction

Fitting ↔ 0,0 cm ↓ 0,0 cm

Maintenance advice     

Label

Minimum order 25 linear(s) meter(s)



Visual not taking into account the printing medium, the final rendering may vary according to the chosen medium.

Technical characteristics

Resilience

Lightfastness (units Class/8)

5

Pilling

5

Martindale (Cycles)

60000

Print pattern SALIN



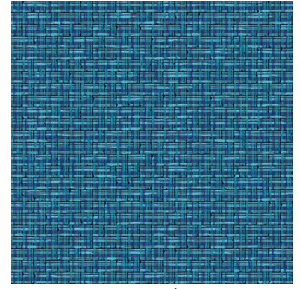
SALIN Abricot 08



SALIN Anis 62



SALIN Fuchsia 33



SALIN Océan 91



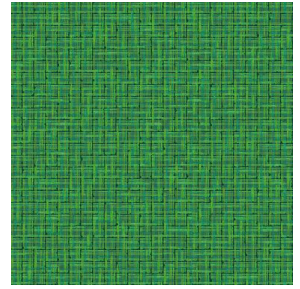
SALIN Orange 15



SALIN Rouge 21



SALIN Turquoise 53



SALIN Vert 24



(Headquarters) SOTEXPRO - 510 route de Montchal - 42360 PANISSIÈRES - FRANCE - +33 4 77 27 60 60
(Showroom) Le LAB' SOTEXPRO - 4 rue du Mail - 75002 PARIS - FRANCE

Non-contractual photos and colors - Indicative fitting - Fitting may vary depending on support selected