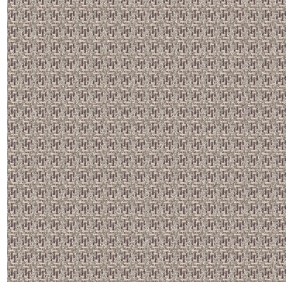




TAO BPI 00  
Printing support



EDITH Ficelle 09  
Print pattern



## Printing support **TAO BPI 00** Print pattern **EDITH Ficelle 09**

Unclassified velvet print support with acrylic coating

**Applications** Roman blinds - Panel curtains - Curtains


**Composition** 100% ungraded polyester

**Weight** 465 g/m<sup>2</sup>

**Width** 132 cm

**Fabric direction** Standard Direction

**Fitting** ↔ 0,0 cm ↓ 0,0 cm

**Maintenance advice**     

**Label**

**Minimum order** 25 linear(s) meter(s)



Visual not taking into account the printing medium, the final rendering may vary according to the chosen medium.

## Technical characteristics

Resilience	Lightfastness (units Class/8)	5
	Pilling	5
	Martindale (Cycles)	60000