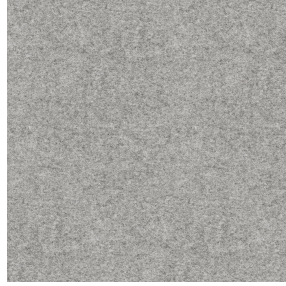




TAO BPI 00
Printing support



ELAINA Gris 91
Print pattern



Printing support **TAO BPI 00** Print pattern **ELAINA Gris 91**

Unclassified velvet print support with acrylic coating

Applications Roman blinds - Panel curtains - Curtains

Composition 100% ungraded polyester

Weight 465 g/m²

Width 132 cm

Fabric direction Standard Direction

Fitting ↔ 0,0 cm ↓ 0,0 cm

Maintenance advice     

Label

Minimum order 25 linear(s) meter(s)



Visual not taking into account the printing medium, the final rendering may vary according to the chosen medium.

Technical characteristics

Resilience

Lightfastness (units Class/8)

5

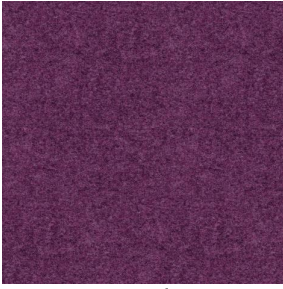
Pilling

5

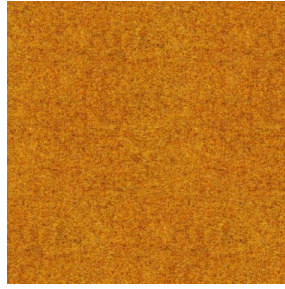
Martindale (Cycles)

60000

Print pattern ELAINA



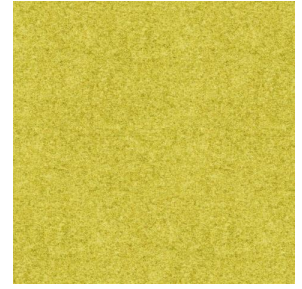
ELAINA Violine 105



ELAINA Ocre 03



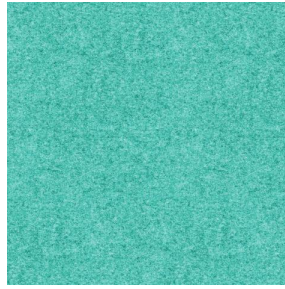
ELAINA Lin 11



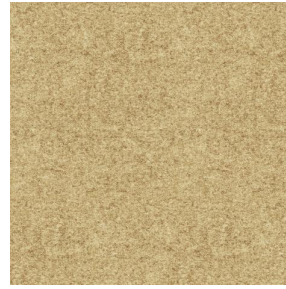
ELAINA Bergamote 121



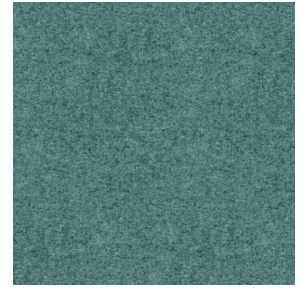
ELAINA Rose 129



ELAINA Pacifique 54



ELAINA Beige 63



ELAINA Céladon 135



ELAINA Saphir 106



ELAINA Anis 62



ELAINA Rouge 21



ELAINA Hortensia 134



ELAINA Prairie 125



ELAINA Graphite 77



ELAINA Lierre 124



ELAINA Naturel 26



ELAINA Genêt 06



ELAINA Ivoire 115



ELAINA Gentiane 16



ELAINA Navy 120



(Headquarters) SOTEXPRO - 510 route de Montchal - 42360 PANISSIÈRES - FRANCE - +33 4 77 27 60 60
(Showroom) Le LAB' SOTEXPRO - 4 rue du Mail - 75002 PARIS - FRANCE

Non-contractual photos and colors - Indicative fitting - Fitting may vary depending on support selected

Print pattern ELAINA



ELAINA Chamois 111



ELAINA Turquoise 53



ELAINA Anthracite 38



ELAINA Fiesta 131



(Headquarters) SOTEXPRO - 510 route de Montchal - 42360 PANISSIÈRES - FRANCE - +33 4 77 27 60 60
(Showroom) Le LAB' SOTEXPRO - 4 rue du Mail - 75002 PARIS - FRANCE

Non-contractual photos and colors - Indicative fitting - Fitting may vary depending on support selected