



TAO BPI 00
Printing support



CALI Naturel 26
Print pattern

Printing support **TAO BPI 00** Print pattern **CALI Naturel 26**

Unclassified velvet print support with acrylic coating

Applications Roman blinds - Panel curtains - Curtains

Composition 100% ungraded polyester

Weight 465 g/m²

Width 132 cm

Fabric direction Standard Direction

Fitting ↔ 33.0 cm ↓ 33.0 cm

Maintenance advice     

Label

Minimum order 25 linear(s) meter(s)



Visual not taking into account the printing medium, the final rendering may vary according to the chosen medium.

Technical characteristics

Resilience

Lightfastness (units Class/8)

5

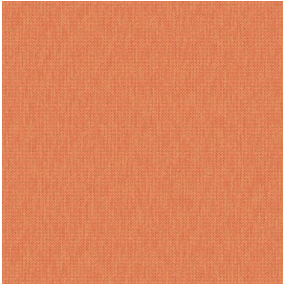
Pilling

5

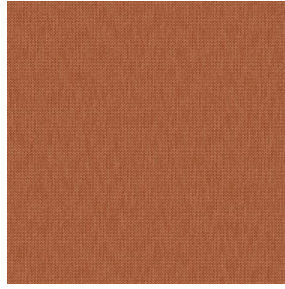
Martindale (Cycles)

60000

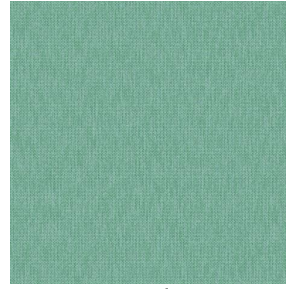
Print pattern CALI



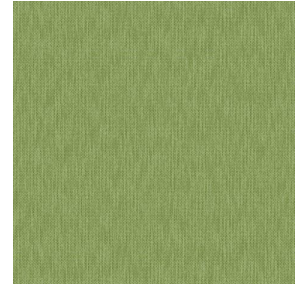
CALI Orange 15



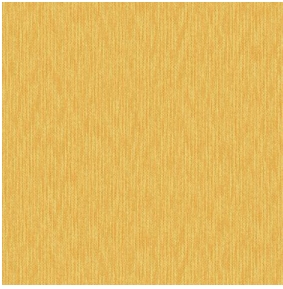
CALI Terracotta 65



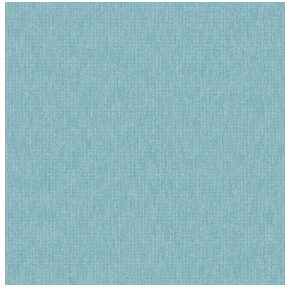
CALI Jade 116



CALI Lierre 24



CALI Soleil 127



CALI Etang 165



(Headquarters) SOTEXPRO - 510 route de Montchal - 42360 PANISSIÈRES - FRANCE - +33 4 77 27 60 60
(Showroom) Le LAB' SOTEXPRO - 4 rue du Mail - 75002 PARIS - FRANCE

Non-contractual photos and colors - Indicative fitting - Fitting may vary depending on support selected