



TAO BPI 00
Printing support



ODE Fuchsia 33
Print pattern



Printing support **TAO BPI 00** Print pattern **ODE Fuchsia 33**

Unclassified velvet print support with acrylic coating

Applications Roman blinds - Panel curtains - Curtains


Composition 100% ungraded polyester

Weight 465 g/m²

Width 132 cm

Fabric direction Standard Direction

Fitting ↔ 50.0 cm ↓ 50.0 cm

Maintenance advice     

Label

Minimum order 25 linear(s) meter(s)

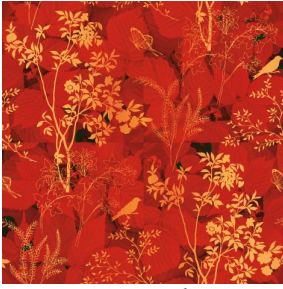


Visual not taking into account the printing medium, the final rendering may vary according to the chosen medium.

Technical characteristics

Resilience	Lightfastness (units Class/8)	5
	Pilling	5
	Martindale (Cycles)	60000

Print pattern ODE



ODE Corail 14



ODE Bleu 41



ODE Turquoise 53



ODE Lilas 19



(Headquarters) SOTEXPRO - 510 route de Montchal - 42360 PANISSIÈRES - FRANCE - +33 4 77 27 60 60
(Showroom) Le LAB' SOTEXPRO - 4 rue du Mail - 75002 PARIS - FRANCE

Non-contractual photos and colors - Indicative fitting - Fitting may vary depending on support selected