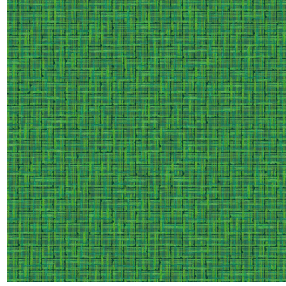




VEGA 00 BPI 00
Printing support



SALIN Vert 24
Print pattern



Printing support **VEGA 00 BPI 00** Print pattern **SALIN Vert 24**

Blackout print support with velvet look

Technical properties



Flame retardant

Applications Roman blinds - Panel curtains - Curtains

Composition 100% polyester with white flocked acrylic backing

Weight 390 g/m²

Width 260 cm

Fabric direction Room High Direction

Fitting ↔ 0.0 cm ↓ 0.0 cm

Maintenance advice     

Label

Minimum order 25 linear(s) meter(s)



Visual not taking into account the printing medium, the final rendering may vary according to the chosen medium.

Technical characteristics

Flame retardant

EN13773 : 2003 Class 1 / BS 5867 TYPE B / B1 / IMO PASS

Resilience

Lightfastness (units Class/8)	4
Dimensional Stability (%)	
Warp	-1
Weft	0
Breaking Elongation	
Warp	69
Weft	106
Breaking load (daN)	
Warp	52
Weft	41

Print pattern SALIN



SALIN Abricot 08



SALIN Anis 62



SALIN Fuchsia 33



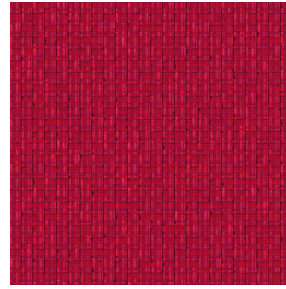
SALIN Naturel 26



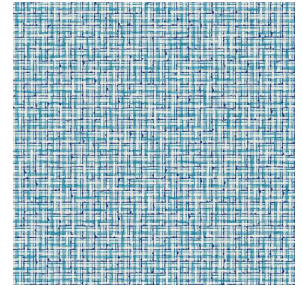
SALIN Océan 91



SALIN Orange 15



SALIN Rouge 21



SALIN Turquoise 53



(Headquarters) SOTEXPRO - 510 route de Montchal - 42360 PANISSIÈRES - FRANCE - +33 4 77 27 60 60
(Showroom) Le LAB' SOTEXPRO - 4 rue du Mail - 75002 PARIS - FRANCE

Non-contractual photos and colors - Indicative fitting - Fitting may vary depending on support selected