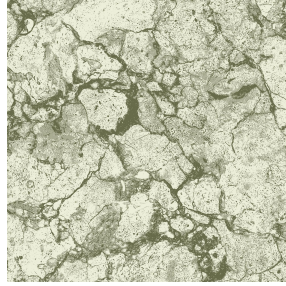




VEGA 00 BPI 00  
Printing support



CARRARA Absinthe 132  
Print pattern



Visual not taking into account the printing medium, the final rendering may vary according to the chosen medium.

## Printing support **VEGA 00 BPI 00** Print pattern **CARRARA Absinthe 132**

Blackout print support with velvet look

### Technical properties



Flame retardant

**Applications** Roman blinds - Panel curtains - Curtains

**Composition** 100% polyester with white flocked acrylic backing

**Weight** 390 g/m<sup>2</sup>

**Width** 260 cm

**Fabric direction** Room High Direction

**Fitting** ↔ 0.0 cm ↓ 0.0 cm

**Maintenance advice**     

**Label**

**Minimum order** 25 linear(s) meter(s)

## Technical characteristics

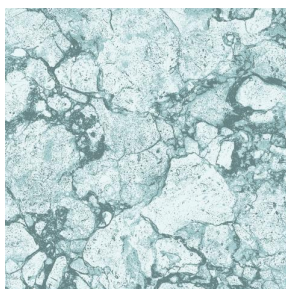
Flame retardant

EN13773 : 2003 Class 1 / BS 5867 TYPE B / B1 / IMO PASS

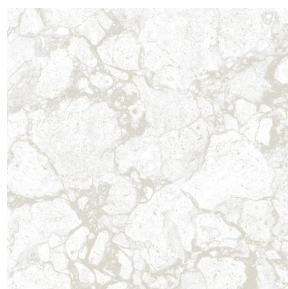
Resilience

Lightfastness (units Class/8)	4
Dimensional Stability (%)	
Warp	-1
Weft	0
Breaking Elongation	
Warp	69
Weft	106
Breaking load (daN)	
Warp	52
Weft	41

# Print pattern CARRARA



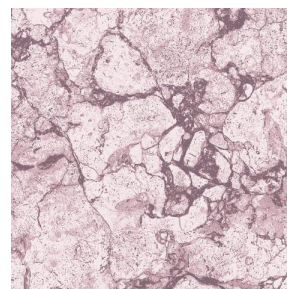
CARRARA Céladon 135



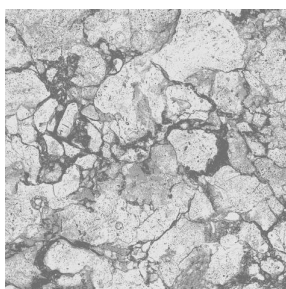
CARRARA Perle 96



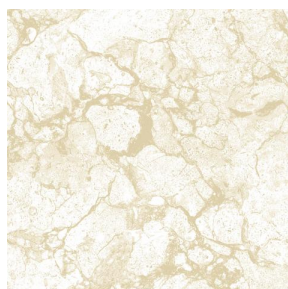
CARRARA Lin 11



CARRARA Vieux rose 64



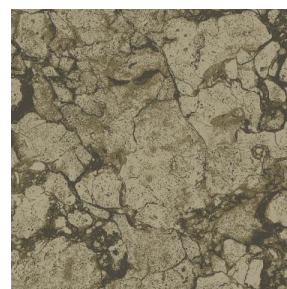
CARRARA Gris 97



CARRARA Naturel 26



CARRARA Ficelle 09



CARRARA Chamois 111



(Headquarters) SOTEXPRO - 510 route de Montchal - 42360 PANISSIÈRES - FRANCE - +33 4 77 27 60 60  
(Showroom) Le LAB' SOTEXPRO - 4 rue du Mail - 75002 PARIS - FRANCE

*Non-contractual photos and colors - Indicative fitting - Fitting may vary depending on support selected*