



**VELTEN BPI 00**  
Printing support



**ELAINA Rose 129**  
Print pattern



## Printing support **VELTEN BPI 00** Print pattern **ELAINA Rose 129**

Unclassified velvet print support with acrylic coating

### Technical properties

**Applications** Roman blinds - Panel curtains - Curtains

**Composition** 100% ungraded polyester with white flocked acrylic backing

**Weight** 390 g/m<sup>2</sup>

**Width** 260 cm

**Fabric direction** Standard Direction

**Fitting** ↔ 0.0 cm ↑ 0.0 cm

**Maintenance advice**     

**Label**

**Minimum order** 25 linear(s) meter(s)



Visual not taking into account the printing medium, the final rendering may vary according to the chosen medium.

## Technical characteristics

Resilience

Lightfastness (units Class/8)

4

Dimensional Stability (%)

Warp

-1

Weft

0

Breaking Elongation

Warp

69

Weft

106

Breaking load (daN)

Warp

52

Weft

41

# Print pattern ELAINA



ELAINA Gris 91



ELAINA Violine 105



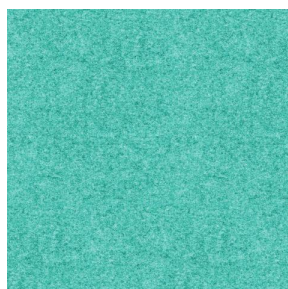
ELAINA Ocre 03



ELAINA Lin 11



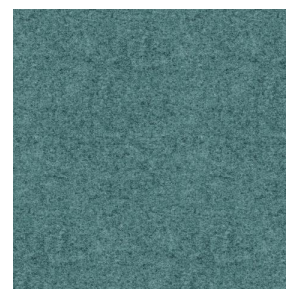
ELAINA Bergamote 121



ELAINA Pacifique 54



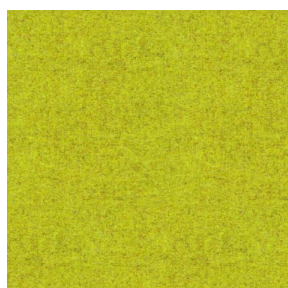
ELAINA Beige 63



ELAINA Céladon 135



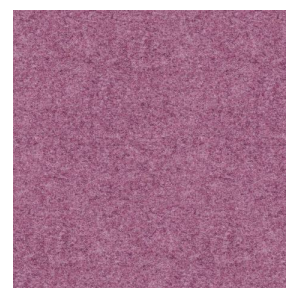
ELAINA Saphir 106



ELAINA Anis 62



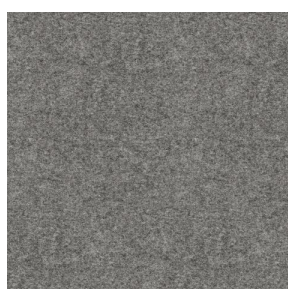
ELAINA Rouge 21



ELAINA Hortensia 134



ELAINA Prairie 125



ELAINA Graphite 77



ELAINA Lierre 124



ELAINA Naturel 26



ELAINA Genêt 06



ELAINA Ivoire 115



ELAINA Gentiane 16



ELAINA Navy 120



(Headquarters) SOTEXPRO - 510 route de Montchal - 42360 PANISSIÈRES - FRANCE - +33 4 77 27 60 60  
(Showroom) Le LAB' SOTEXPRO - 4 rue du Mail - 75002 PARIS - FRANCE

Non-contractual photos and colors - Indicative fitting - Fitting may vary depending on support selected



## Print pattern ELAINA



ELAINA Chamois 111



ELAINA Turquoise 53



ELAINA Anthracite 38



ELAINA Fiesta 131



(Headquarters) SOTEXPRO - 510 route de Montchal - 42360 PANISSIÈRES - FRANCE - +33 4 77 27 60 60  
(Showroom) Le LAB' SOTEXPRO - 4 rue du Mail - 75002 PARIS - FRANCE

*Non-contractual photos and colors - Indicative fitting - Fitting may vary depending on support selected*