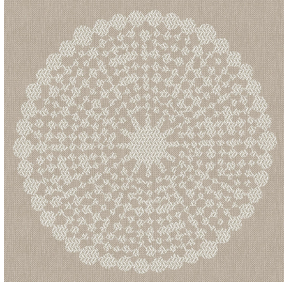




VELTEN BPI 00
Printing support



ANGELE Sable 67
Print pattern








Visual not taking into account the printing medium, the final rendering may vary according to the chosen medium.

Printing support **VELTEN BPI 00** Print pattern **ANGELE Sable 67**

Unclassified velvet print support with acrylic coating

Technical properties

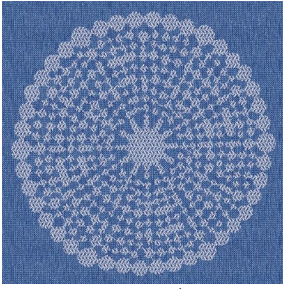
- Applications** Roman blinds - Panel curtains - Curtains
- Composition** 100% ungraded polyester with white flocked acrylic backing
- Weight** 390 g/m²
- Width** 260 cm
- Fabric direction** Standard Direction
- Fitting** ↔ 30.0 cm ↓ 30.0 cm
- Maintenance advice**     
- Label**
- Minimum order** 25 linear(s) meter(s)

Technical characteristics

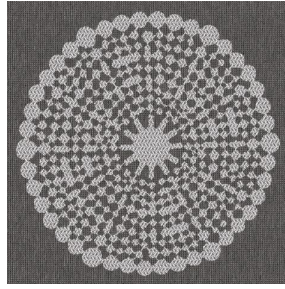
Resilience

Lightfastness (units Class/8)	4
Dimentional Stability (%)	
Warp	-1
Weft	0
Breaking Elongation	
Warp	69
Weft	106
Breaking load (daN)	
Warp	52
Weft	41

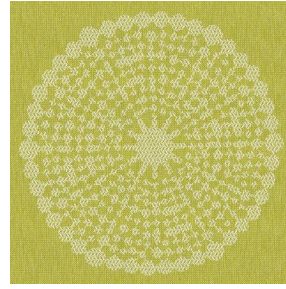
Print pattern ANGELE



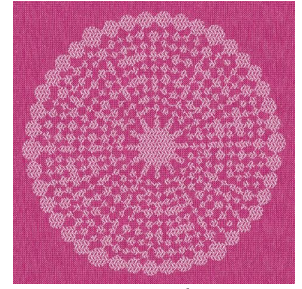
ANGELE Océan 91



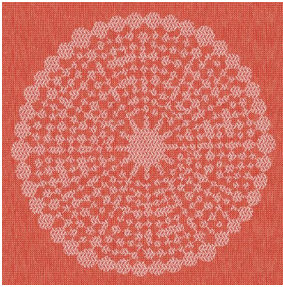
ANGELE Taupe 95



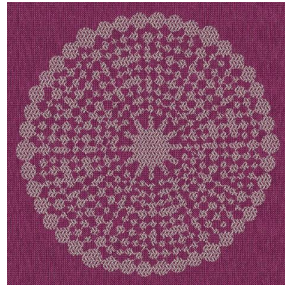
ANGELE Anis 62



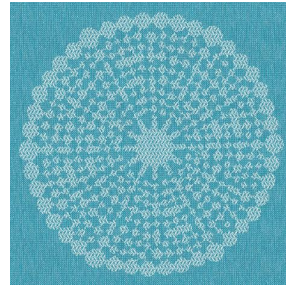
ANGELE Fuchsia 33



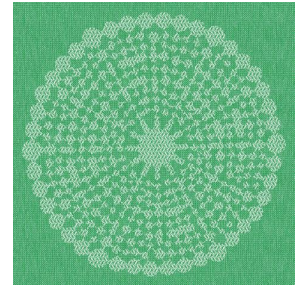
ANGELE Orange 15



ANGELE Prune 84



ANGELE Turquoise 53



ANGELE Vert 24



(Headquarters) SOTEXPRO - 510 route de Montchal - 42360 PANISSIÈRES - FRANCE - +33 4 77 27 60 60
(Showroom) Le LAB' SOTEXPRO - 4 rue du Mail - 75002 PARIS - FRANCE

Non-contractual photos and colors - Indicative fitting - Fitting may vary depending on support selected