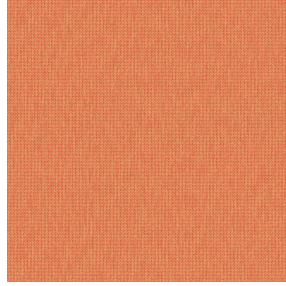
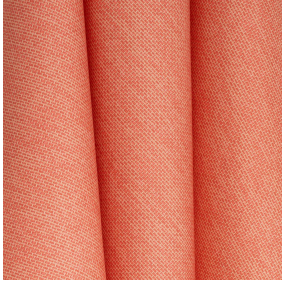




VELTEN BPI 00
Printing support



CALI Orange 15
Print pattern



Printing support **VELTEN BPI 00** Print pattern **CALI Orange 15**

Unclassified velvet print support with acrylic coating

Technical properties

Applications Roman blinds - Panel curtains - Curtains

Composition 100% ungraded polyester with white flocked acrylic backing

Weight 390 g/m²

Width 260 cm

Fabric direction Standard Direction

Fitting ↔ 33.0 cm ↓ 33.0 cm

Maintenance advice     

Label

Minimum order 25 linear(s) meter(s)

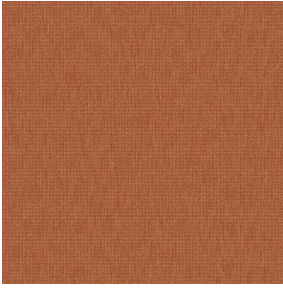


Visual not taking into account the printing medium, the final rendering may vary according to the chosen medium.

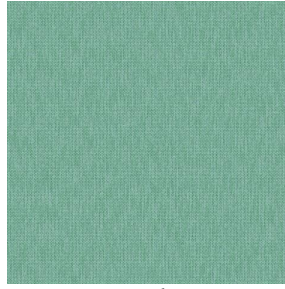
Technical characteristics

Resilience	Lightfastness (units Class/8)	4
	Dimensional Stability (%)	
	Warp	-1
	Weft	0
	Breaking Elongation	
	Warp	69
	Weft	106
	Breaking load (daN)	
	Warp	52
	Weft	41

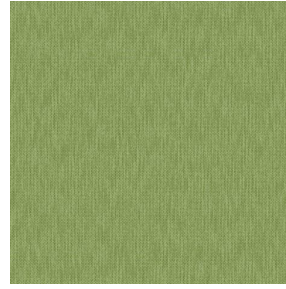
Print pattern CALI



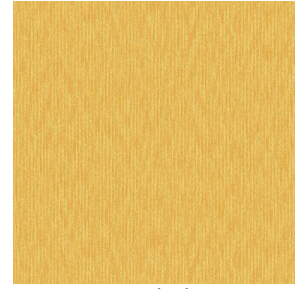
CALI Terracotta 65



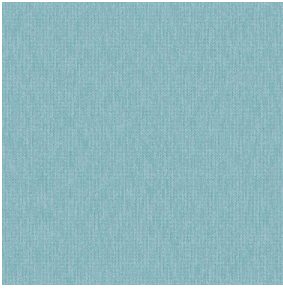
CALI Jade 116



CALI Lierre 24



CALI Soleil 127



CALI Etang 165



CALI Naturel 26



(Headquarters) SOTEXPRO - 510 route de Montchal - 42360 PANISSIÈRES - FRANCE - +33 4 77 27 60 60
(Showroom) Le LAB' SOTEXPRO - 4 rue du Mail - 75002 PARIS - FRANCE

Non-contractual photos and colors - Indicative fitting - Fitting may vary depending on support selected