



**VELTEN BPI 00**  
Printing support



**CALI Naturel 26**  
Print pattern

## Printing support **VELTEN BPI 00** Print pattern **CALI Naturel 26**

Unclassified velvet print support with acrylic coating

### Technical properties

**Applications** Roman blinds - Panel curtains - Curtains

**Composition** 100% ungraded polyester with white flocked acrylic backing

**Weight** 390 g/m<sup>2</sup>

**Width** 260 cm

**Fabric direction** Standard Direction

**Fitting** ↔ 33.0 cm ↓ 33.0 cm

**Maintenance advice**     

**Label**

**Minimum order** 25 linear(s) meter(s)



Visual not taking into account the printing medium, the final rendering may vary according to the chosen medium.

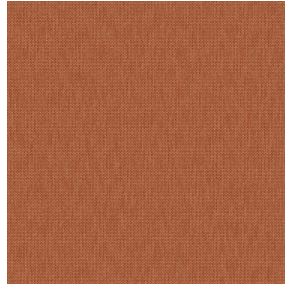
## Technical characteristics

Resilience	Lightfastness (units Class/8)	<b>4</b>
	Dimensional Stability (%)	
	Warp	<b>-1</b>
	Weft	<b>0</b>
	Breaking Elongation	
	Warp	<b>69</b>
	Weft	<b>106</b>
	Breaking load (daN)	
	Warp	<b>52</b>
	Weft	<b>41</b>

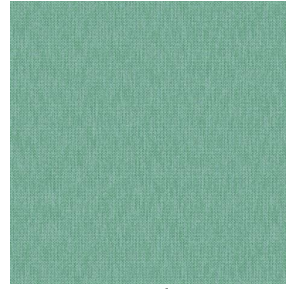
## Print pattern CALI



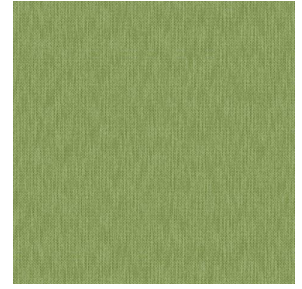
CALI Orange 15



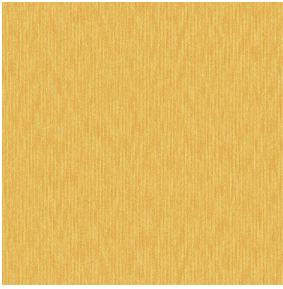
CALI Terracotta 65



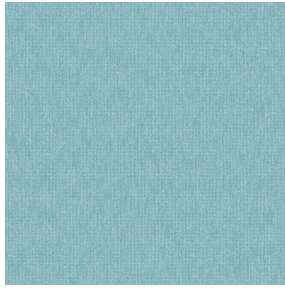
CALI Jade 116



CALI Lierre 24



CALI Soleil 127



CALI Etang 165



(Headquarters) SOTEXPRO - 510 route de Montchal - 42360 PANISSIÈRES - FRANCE - +33 4 77 27 60 60  
(Showroom) Le LAB' SOTEXPRO - 4 rue du Mail - 75002 PARIS - FRANCE

Non-contractual photos and colors - Indicative fitting - Fitting may vary depending on support selected