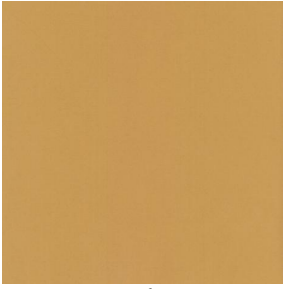
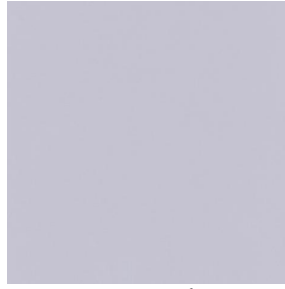


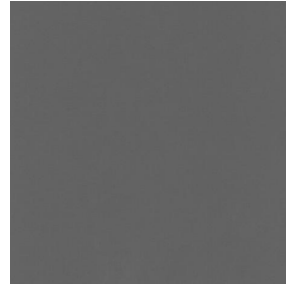
ASTRAL



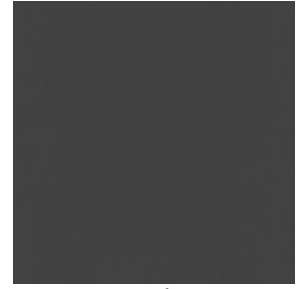
ASTRAL abricot 08



ASTRAL perle 96



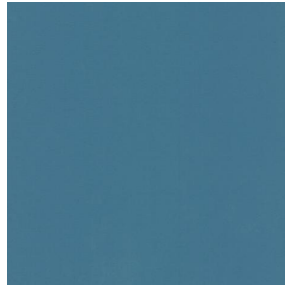
ASTRAL sienne 29



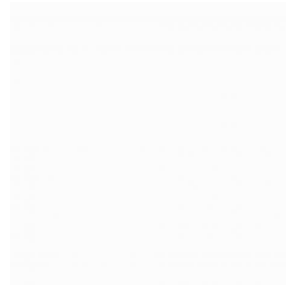
ASTRAL anthracite 38



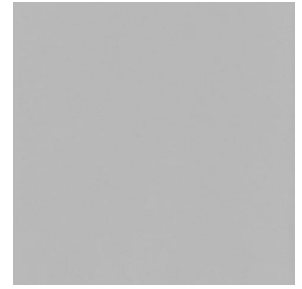
ASTRAL océan 91



ASTRAL arctique 58



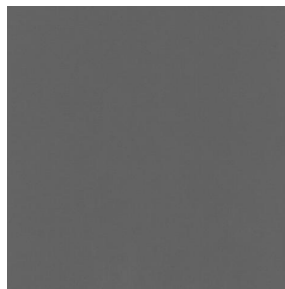
ASTRAL blanc 01



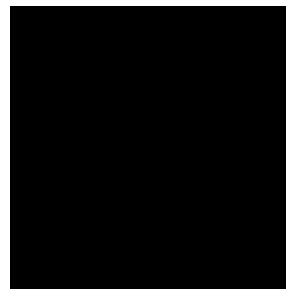
ASTRAL mastic 48



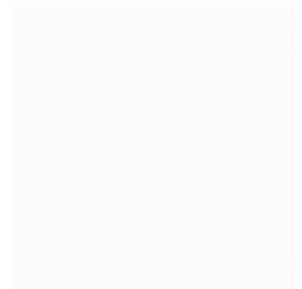
ASTRAL crème 02



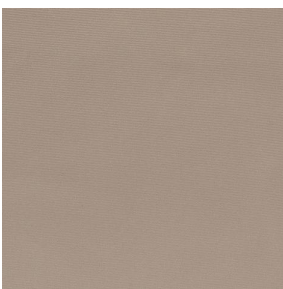
ASTRAL taupe 95



ASTRAL noir 10



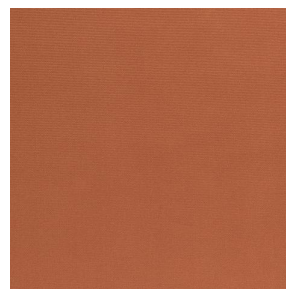
ASTRAL BPI 00



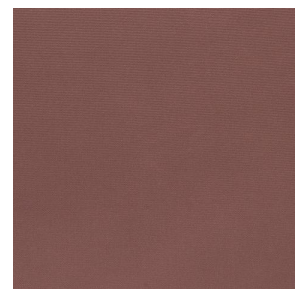
ASTRAL Beige 63



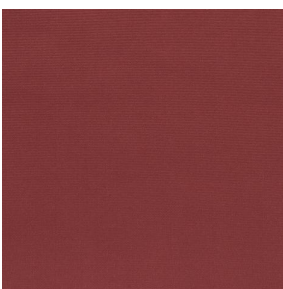
ASTRAL Safran 49



ASTRAL Terre 107



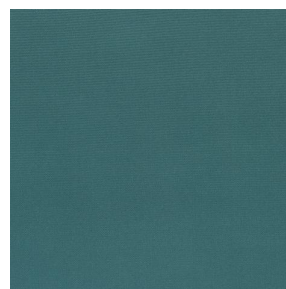
ASTRAL Chamois 111



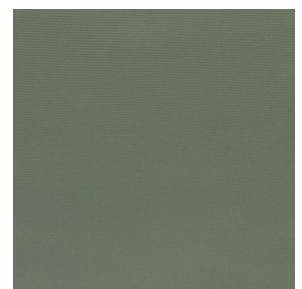
ASTRAL Bordeaux 04



ASTRAL Ecume 82



ASTRAL Sapin 126



ASTRAL Kaki 148



sotexpro

(Headquarters) SOTEXPRO - 510 route de Montchal - 42360 PANISSIÈRES - FRANCE - +33 4 77 27 60 60
(Showroom) Le LAB' SOTEXPRO - 4 rue du Mail - 75002 PARIS - FRANCE

Non-contractual photos and colors - Indicative fitting - Fitting may vary depending on support selected

ASTRAL

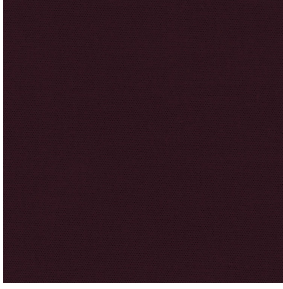


ASTRAL Amande 75



(Headquarters) SOTEXPRO - 510 route de Montchal - 42360 PANISSIÈRES - FRANCE - +33 4 77 27 60 60
(Showroom) Le LAB' SOTEXPRO - 4 rue du Mail - 75002 PARIS - FRANCE

Non-contractual photos and colors - Indicative fitting - Fitting may vary depending on support selected



ASTRAL aubergine 27

Ce tissu est très performant pour l'occultation. Il se décline dans une gamme de coloris très variée.

Propriétés techniques



Thermique

Applications Store bateau - Parois japonaises - Rideaux

Composition 100% polyester avec envers acrylique floqué blanc

Poids 280 g/m² Laize 280 cm

Sens Contre sens ou sens normal Raccord ↔ cm ↓ cm

Conseils d'entretien

Minimum commande 25 mètre(s) linéaire(s)

Caractéristiques techniques

Non feu	EN13773 : 2003 Class 1 / BS 5867 TYPE C / B1 / IMO PASS / UNI 8456 / 9174 Classe Uno	
Indices optiques	Réflexion lumière :	82 %
	Absorption lumière :	18 %
	Transmission lumière :	0 %
Indices thermiques	réflexion solaire :	74 %
	absorption solaire :	26 %
	Transmission solaire :	0 %
	Transmission UV :	0 %
	Gtot :	Gt 33 % Fc 55 %
Résistance	Solidité lumière (unités Class/8)	5
	Stabilité dimensionnelle (%)	
	Chaîne	-0,5
	Trame	0
	Allongement rupture (mm)	
	Chaîne	26
	Trame	15
	Résistance rupture (daN)	
	Chaîne	62
Trame	31	



(Headquarters) SOTEXPRO - 510 route de Montchal - 42360 PANISSIÈRES - FRANCE - +33 4 77 27 60 60
(Showroom) Le LAB' SOTEXPRO - 4 rue du Mail - 75002 PARIS - FRANCE

Non-contractual photos and colors - Indicative fitting - Fitting may vary depending on supports selected