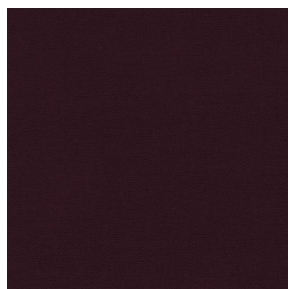


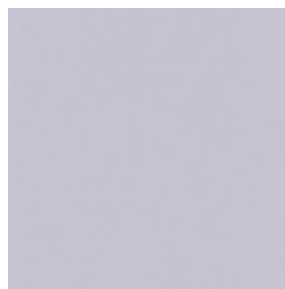
ASTRAL



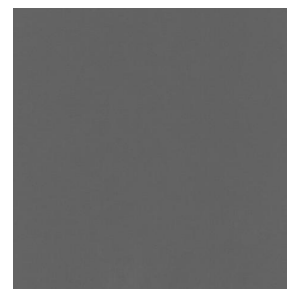
ASTRAL abricot 08



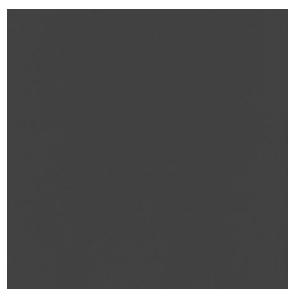
ASTRAL aubergine 27



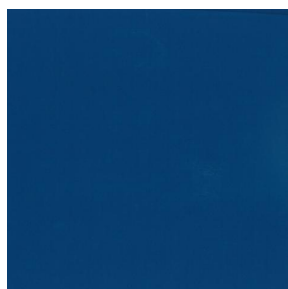
ASTRAL perle 96



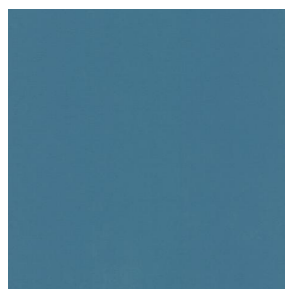
ASTRAL sienne 29



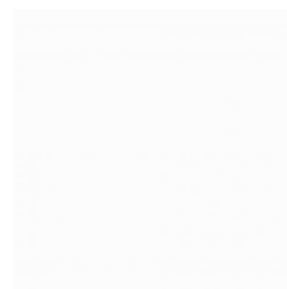
ASTRAL anthracite 38



ASTRAL océan 91



ASTRAL arctique 58



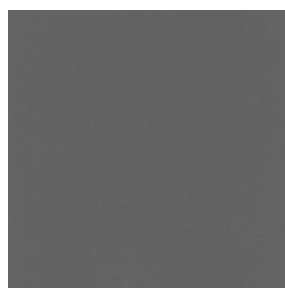
ASTRAL blanc 01



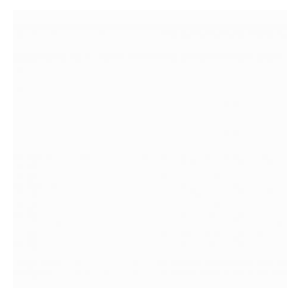
ASTRAL mastic 48



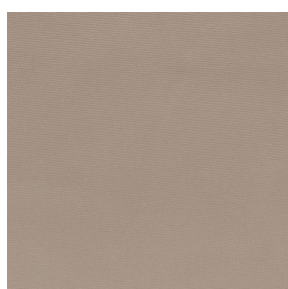
ASTRAL crème 02



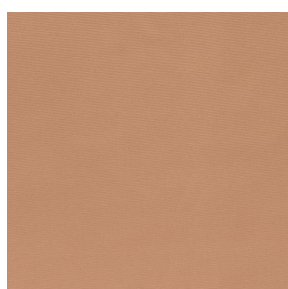
ASTRAL taupe 95



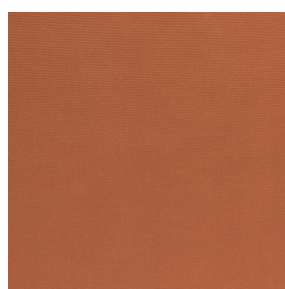
ASTRAL BPI 00



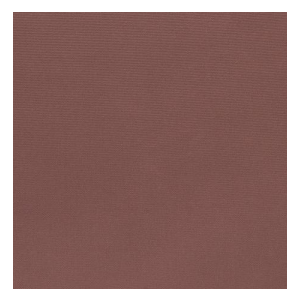
ASTRAL Beige 63



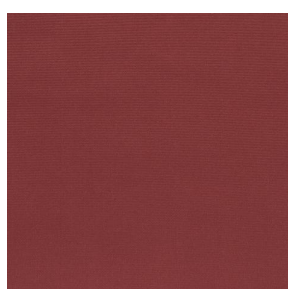
ASTRAL Safran 49



ASTRAL Terre 107



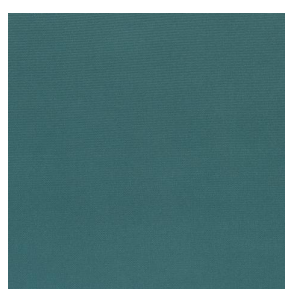
ASTRAL Chamois 111



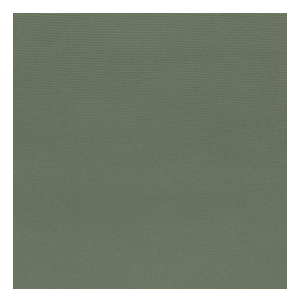
ASTRAL Bordeaux 04



ASTRAL Ecume 82



ASTRAL Sapin 126



ASTRAL Kaki 148



(Headquarters) SOTEXPRO - 510 route de Montchal - 42360 PANISSIÈRES - FRANCE - +33 4 77 27 60 60
(Showroom) Le LAB' SOTEXPRO - 4 rue du Mail - 75002 PARIS - FRANCE

Non-contractual photos and colors - Indicative fitting - Fitting may vary depending on support selected

ASTRAL



ASTRAL Amande 75



(Headquarters) SOTEXPRO - 510 route de Montchal - 42360 PANISSIÈRES - FRANCE - +33 4 77 27 60 60
(Showroom) Le LAB' SOTEXPRO - 4 rue du Mail - 75002 PARIS - FRANCE

Non-contractual photos and colors - Indicative fitting - Fitting may vary depending on support selected



ASTRAL noir 10

Ce tissu uni est très performant pour l'occultation, il se décline dans une gamme de coloris très variée.

Propriétés techniques



Thermique

Applications Store bateau - Parois japonaises - Rideaux

Composition 100% polyester avec envers acrylique floqué blanc

Poids 280 g/m² Laize 280 cm

Sens Contre sens ou sens normal Raccord ↔ cm ↓ cm

Conseils d'entretien 

Minimum commande 25 mètre(s) linéaire(s)

Caractéristiques techniques

Non feu

EN13773 : 2003 Class 1 / BS 5867 TYPE C / B1 / IMO PASS / UNI 8456 / 9174 Classe Uno

Indices optiques

Réflexion lumière : **82 %**

Absorption lumière : **18 %**

Transmission lumière : **0 %**

Indices thermiques

réflexion solaire : **74 %**

absorption solaire : **26 %**

Transmission solaire : **0 %**

Transmission UV : **0 %**

Gtot : **Gt 33 % Fc 55 %**

Résistance

Solidité lumière (unités Class/8) **5**

Stabilité dimensionnelle (%)

Chaîne **-0,5**

Trame **0**

Allongement rupture (mm)

Chaîne **26**

Trame **15**

Résistance rupture (daN)

Chaîne **62**

Trame **31**



(Headquarters) SOTEXPRO - 510 route de Montchal - 42360 PANISSIÈRES - FRANCE - +33 4 77 27 60 60
(Showroom) Le LAB' SOTEXPRO - 4 rue du Mail - 75002 PARIS - FRANCE

Non-contractual photos and colors - Indicative fitting - Fitting may vary depending on supports selected