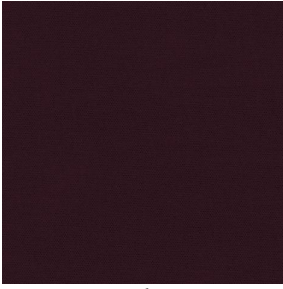
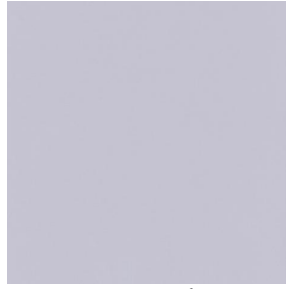


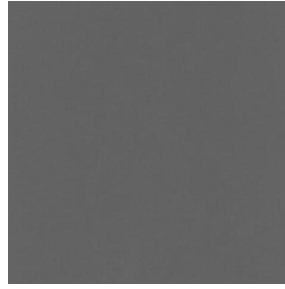
ASTRAL



ASTRAL aubergine 27



ASTRAL perle 96



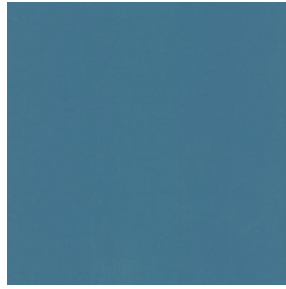
ASTRAL sienne 29



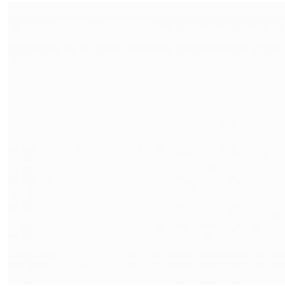
ASTRAL anthracite 38



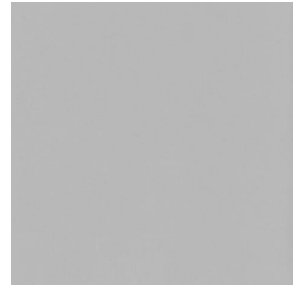
ASTRAL océan 91



ASTRAL arctique 58



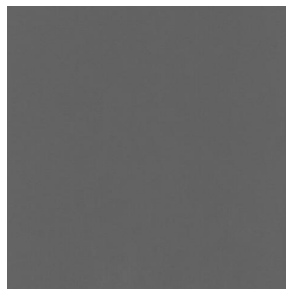
ASTRAL blanc 01



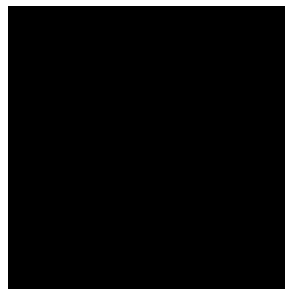
ASTRAL mastic 48



ASTRAL crème 02



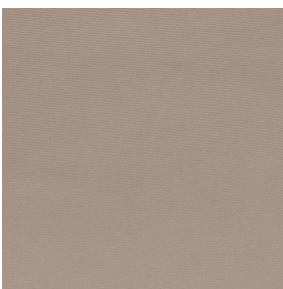
ASTRAL taupe 95



ASTRAL noir 10



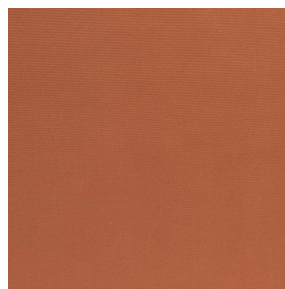
ASTRAL BPI 00



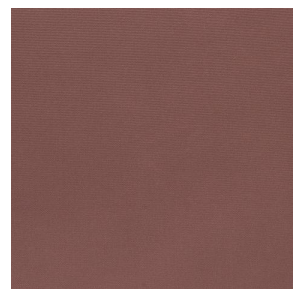
ASTRAL Beige 63



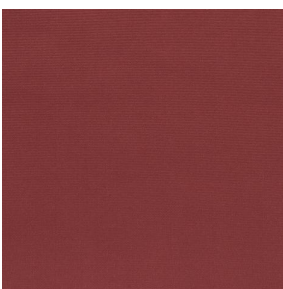
ASTRAL Safran 49



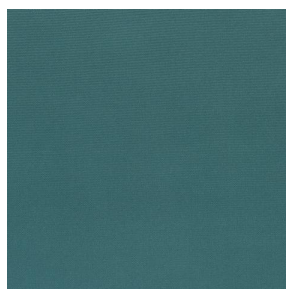
ASTRAL Terre 107



ASTRAL Chamois 111



ASTRAL Bordeaux 04



ASTRAL Sapin 126



ASTRAL Corail 14



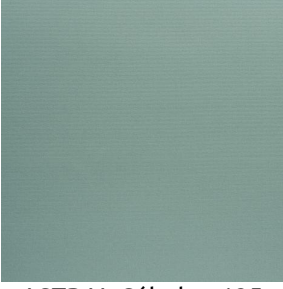
ASTRAL Rose 129



(Headquarters) SOTEXPRO - 510 route de Montchal - 42360 PANISSIÈRES - FRANCE - +33 4 77 27 60 60

Non-contractual photos and colors - Indicative fitting - Fitting may vary depending on support selected

ASTRAL

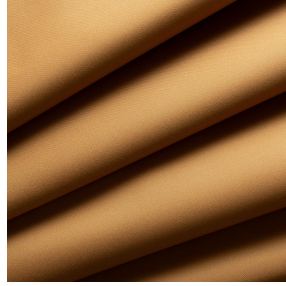
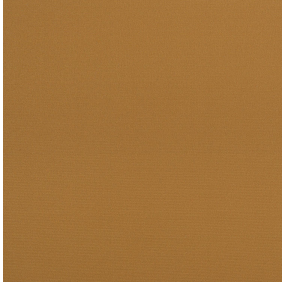


ASTRAL Céladon 135



(Headquarters) SOTEXPRO - 510 route de Montchal - 42360 PANISSIÈRES - FRANCE - +33 4 77 27 60 60

Non-contractual photos and colors - Indicative fitting - Fitting may vary depending on support selected



ASTRAL Or 94

Ce tissu uni est très performant pour l'occultation. Il se décline dans une gamme de coloris très variée.

Propriétés techniques



Thermique

Applications Store bateau - Parois japonaises - Rideaux

Composition 100% polyester avec envers acrylique floqué blanc

Poids 280 g/m² 784 g/m² Laize 280 cm

Sens Contre sens ou sens normal Raccord ↔ cm ↓ cm

Conseils d'entretien

Minimum commande 25 mètre(s) linéaire(s)

Caractéristiques techniques

Non feu

EN13773 : 2003 Class 1 / BS 5867 TYPE C / B1 / IMO PASS / UNI 8456 / 9174 Classe Uno

Indices optiques

Réflexion lumière : **82 %**

Absorption lumière : **18 %**

Transmission lumière : **0 %**

Indices thermiques

réflexion solaire : **74 %**

absorption solaire : **26 %**

Transmission solaire : **0 %**

Transmission UV : **0 %**

Gtot : **Gt 33 % Fc 55 %**

Résistance

Solidité lumière (unités Class/8) **5**

Stabilité dimensionnelle (%)

Chaîne **-0.5**

Trame **0**

Allongement rupture (mm)

Chaîne **26**

Trame **15**

Résistance rupture (daN)

Chaîne **62**

Trame **31**



(Headquarters) SOTEXPRO - 510 route de Montchal - 42360 PANISSIÈRES - FRANCE - +33 4 77 27 60 60

Non-contractual photos and colors - Indicative fitting - Fitting may vary depending on support selected