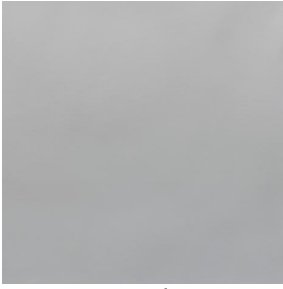


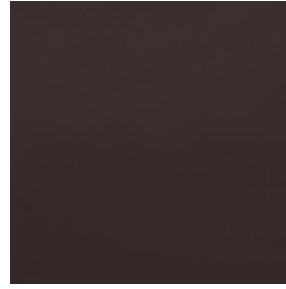
BELORA



BELORA Blanc 01



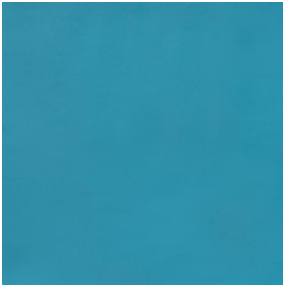
BELORA Beige 90



BELORA Taupe 95



BELORA Acier 18



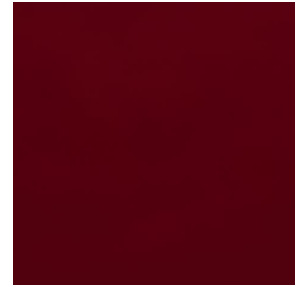
BELORA Turquoise 53



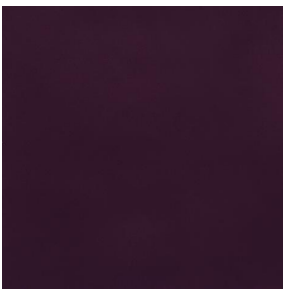
BELORA Mousse 92



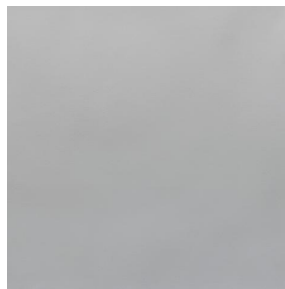
BELORA Fuchsia 33



BELORA Rouge 22



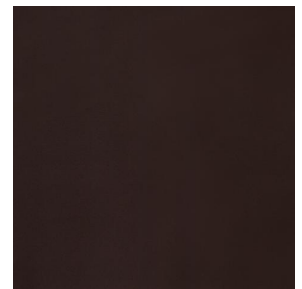
BELORA Prune 84



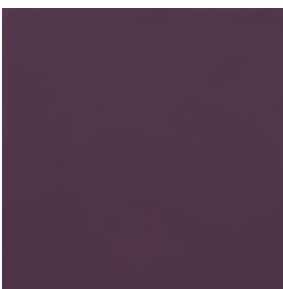
BELORA BPI 00



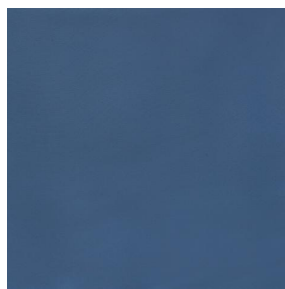
BELORA Pourpre 146



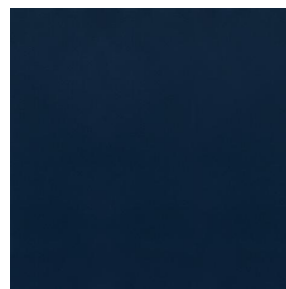
BELORA Marron 102



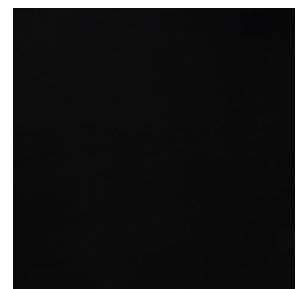
BELORA Mauve 68



BELORA Océan 91



BELORA Marine 25



BELORA Noir 10



BELORA Crème 02



(Headquarters) SOTEXPRO - 510 route de Montchal - 42360 PANISSIÈRES - FRANCE - +33 4 77 27 60 60
(Showroom) Le LAB' SOTEXPRO - 4 rue du Mail - 75002 PARIS - FRANCE

Non-contractual photos and colors - Indicative fitting - Fitting may vary depending on support selected

BELORA BPI 00

Support obscurcissant pour impression numérique. Il ne dispose pas du classement au feu M1.

Propriétés techniques



Thermique



Acoustique

Applications Store bateau - Parois japonaises - Doublure - Rideaux

Composition 100% polyester

Poids 260 g/m² Laize 140 cm

Sens Sens normal Raccord ↔ cm ↓ cm

Conseils d'entretien

Certifications OEKO-TEX STANDARD 100 (CQ 1006/1)

Minimum commande 30 mètre(s) linéaire(s)

Caractéristiques techniques

Non feu	NF 12952
Acoustique	Coeff. moyen de réduction sonore (NRC) : 0.88 Coeff. d'absorption acoustique pondéré (a _w) : 0.90 Classe d'absorption acoustique (a _w) : A
Résistance	Stabilité dimensionnelle (%) Chaîne 0 Trame 0 Allongement rupture (mm) Chaîne 17 Trame 27 Résistance rupture (daN) Chaîne 87 Trame 110



(Headquarters) SOTEXPRO - 510 route de Montchal - 42360 PANISSIÈRES - FRANCE - +33 4 77 27 60 60
(Showroom) Le LAB' SOTEXPRO - 4 rue du Mail - 75002 PARIS - FRANCE

Non-contractual photos and colors - Indicative fitting - Fitting may vary depending on support selected