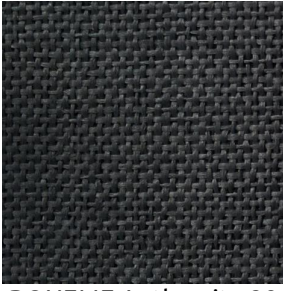
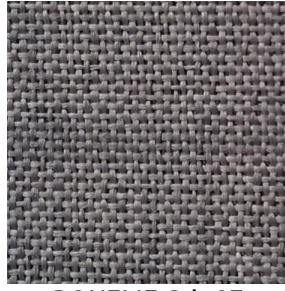


# BOHEME



BOHEME Anthracite 38



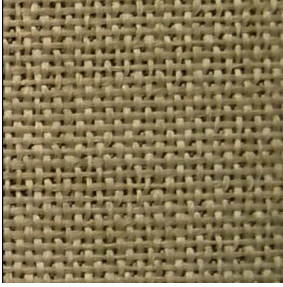
BOHEME Gris 97



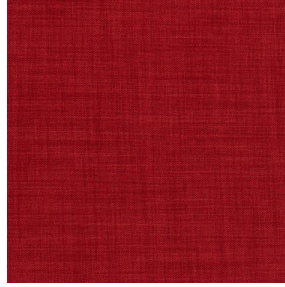
BOHEME Taupe 95



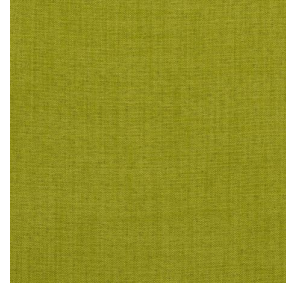
BOHEME Ficelle 09



BOHEME Mastic 48



BOHEME Carmin 14



BOHEME Mousse 92



BOHEME Bleu jean 41

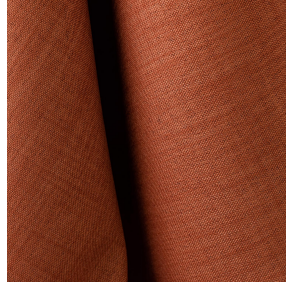


BOHEME Blanc 01



(Headquarters) SOTEXPRO - 510 route de Montchal - 42360 PANISSIÈRES - FRANCE - +33 4 77 27 60 60  
(Showroom) Le LAB' SOTEXPRO - 4 rue du Mail - 75002 PARIS - FRANCE

*Non-contractual photos and colors - Indicative fitting - Fitting may vary depending on support selected*



# BOHEME Citrouille 136

## Propriétés techniques



Non feu



Thermique

Applications Store bateau - Rideaux

Composition 100 % polyester FR

Poids 260 g/m<sup>2</sup> Laize 290 cm

Sens Contre sens ou sens normal Raccord ↔ cm ↓ cm

Conseils d'entretien

Certifications OEKO-TEX STANDARD 100 (CQ 1006/1)

Minimum commande 1 mètre(s) linéaire(s)

## Caractéristiques techniques

Non feu	M1 / B1 / IMO PASS	
Indices optiques	Réflexion lumière :	37 %
	Absorption lumière :	63 %
	Transmission lumière :	0 %
Indices thermiques	réflexion solaire :	48 %
	absorption solaire :	51 %
	Transmission solaire :	1 %
	Transmission UV :	0 %
	Gtot :	Gt 41 % Fc 70 %
Résistance	Solidité lumière (unités Class/8)	5



(Headquarters) SOTEXPRO - 510 route de Montchal - 42360 PANISSIÈRES - FRANCE - +33 4 77 27 60 60  
(Showroom) Le LAB' SOTEXPRO - 4 rue du Mail - 75002 PARIS - FRANCE

Non-contractual photos and colors - Indicative fitting - Fitting may vary depending on support selected