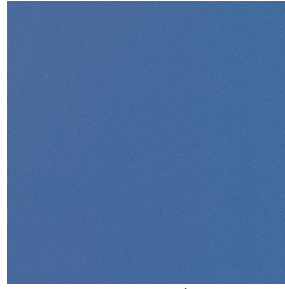


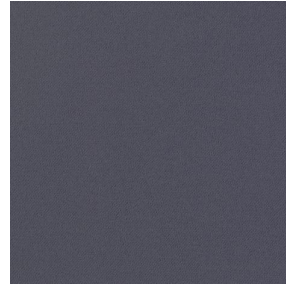
# BOREAL



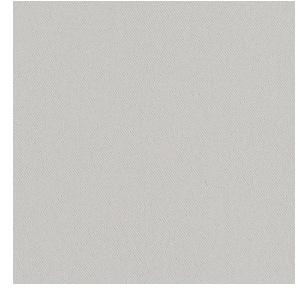
BOREAL Turquoise 53



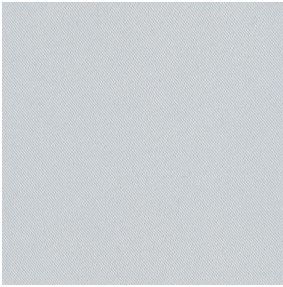
BOREAL Océan 91



BOREAL Acier 18



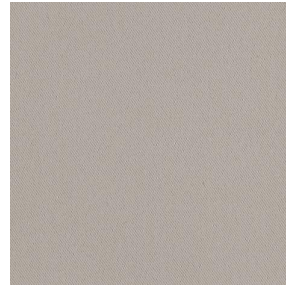
BOREAL Gris 97



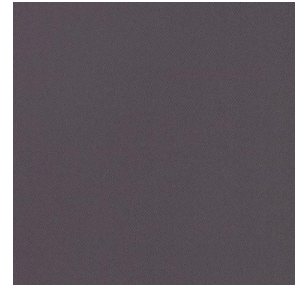
BOREAL Blanc 01



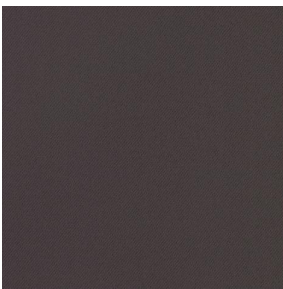
BOREAL Crème 02



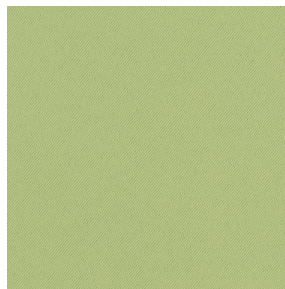
BOREAL Mastic 48



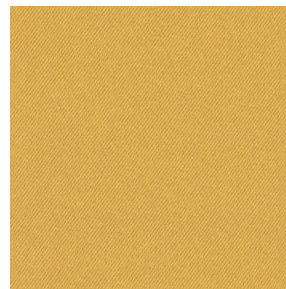
BOREAL Taupe 95



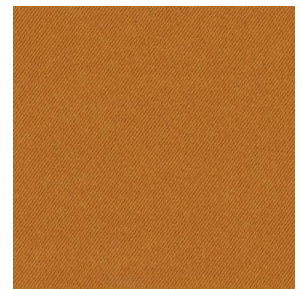
BOREAL Chocolat 70



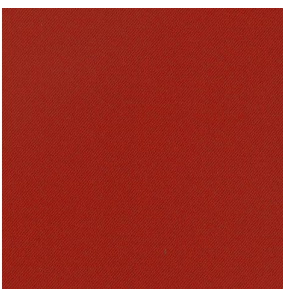
BOREAL Mousse 92



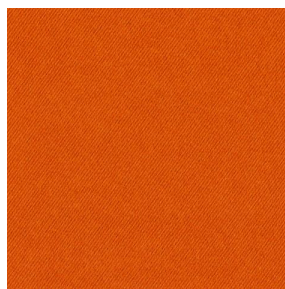
BOREAL Moutarde 47



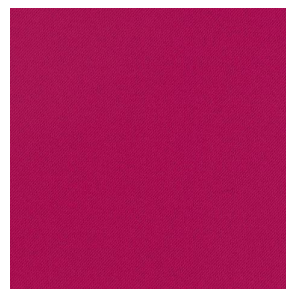
BOREAL Cuivre 50



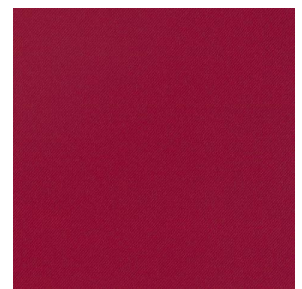
BOREAL Terracotta 65



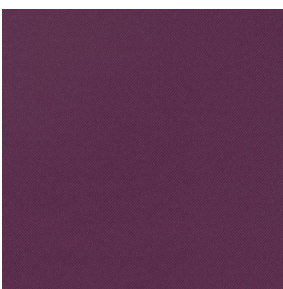
BOREAL Orange 15



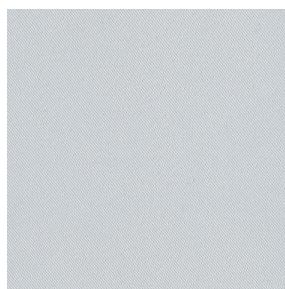
BOREAL Fuchsia 33



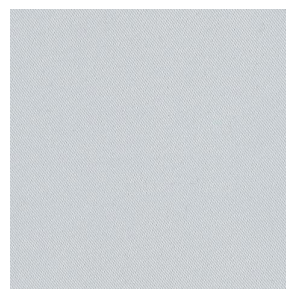
BOREAL Bordeaux 04



BOREAL Prune 84



BOREAL BPI 00



BOREAL BPI 00



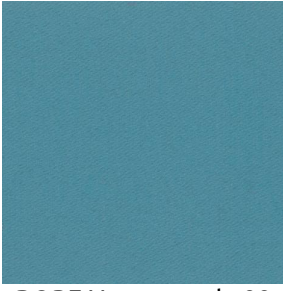
BOREAL cactus 36



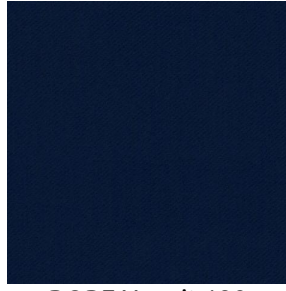
(Headquarters) SOTEXPRO - 510 route de Montchal - 42360 PANISSIÈRES - FRANCE - +33 4 77 27 60 60  
(Showroom) Le LAB' SOTEXPRO - 4 rue du Mail - 75002 PARIS - FRANCE

Non-contractual photos and colors - Indicative fitting - Fitting may vary depending on support selected

# BOREAL



BOREAL emeraude 88



BOREAL nuit 128



BOREAL Titanium 98



BOREAL Faience 149

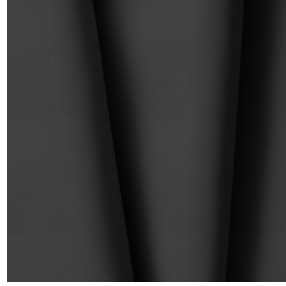
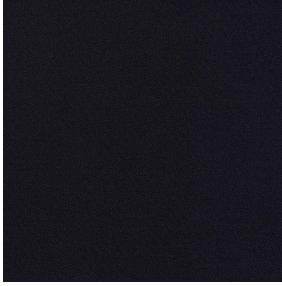


BOREAL Indigo 144



(Headquarters) SOTEXPRO - 510 route de Montchal - 42360 PANISSIÈRES - FRANCE - +33 4 77 27 60 60  
(Showroom) Le LAB' SOTEXPRO - 4 rue du Mail - 75002 PARIS - FRANCE

*Non-contractual photos and colors - Indicative fitting - Fitting may vary depending on support selected*



# BOREAL Noir 10

Ce tissu uni se décline autour d'une gamme de plusieurs coloris, il répond à tous les styles et ambiances.

## Propriétés techniques



Non feu



Thermique



Acoustique

Applications Store bateau - Cache sommier - Doublure - Chemins de lit - Rideaux

Composition 100% polyester FR

Poids 260 g/m<sup>2</sup> Laize 290 cm

Sens Contre sens ou sens normal Raccord ↔ cm ↓ cm

Conseils d'entretien

Certifications OEKO-TEX STANDARD 100 (CQ 1006/1)

Minimum commande 1 mètre(s) linéaire(s)



## Caractéristiques techniques

Non feu	M1 / B1 / IMO PASS / UNI 8456 / 9174 Classe Uno												
Acoustique	Coeff. moyen de réduction sonore (NRC) : <b>0.88</b> Coeff. d'absorption acoustique pondéré (a <sub>w</sub> ) : <b>0.90</b> Classe d'absorption acoustique (a <sub>w</sub> ) : <b>A</b>												
Indices optiques	Réfexion lumière : <b>3 %</b> Absorption lumière : <b>97 %</b> Transmission lumière : <b>0 %</b>												
Indices thermiques	réflexion solaire : <b>27 %</b> absorption solaire : <b>73 %</b> Transmission solaire : <b>0 %</b> Transmission UV : <b>0 %</b> Gtot : <b>Gt 48 % Fc 81 %</b>												
Résistance	Solidité lumière (unités Class/8) : <b>4</b> Stabilité dimensionnelle (%) <table border="0" style="margin-left: 20px;"> <tr> <td>Chaîne</td> <td><b>0</b></td> </tr> <tr> <td>Trame</td> <td><b>0</b></td> </tr> </table> Allongement rupture (mm) <table border="0" style="margin-left: 20px;"> <tr> <td>Chaîne</td> <td><b>17</b></td> </tr> <tr> <td>Trame</td> <td><b>27</b></td> </tr> </table> Résistance rupture (daN) <table border="0" style="margin-left: 20px;"> <tr> <td>Chaîne</td> <td><b>87</b></td> </tr> <tr> <td>Trame</td> <td><b>110</b></td> </tr> </table>	Chaîne	<b>0</b>	Trame	<b>0</b>	Chaîne	<b>17</b>	Trame	<b>27</b>	Chaîne	<b>87</b>	Trame	<b>110</b>
Chaîne	<b>0</b>												
Trame	<b>0</b>												
Chaîne	<b>17</b>												
Trame	<b>27</b>												
Chaîne	<b>87</b>												
Trame	<b>110</b>												



(Headquarters) SOTEXPRO - 510 route de Montchal - 42360 PANISSIÈRES - FRANCE - +33 4 77 27 60 60  
(Showroom) Le LAB' SOTEXPRO - 4 rue du Mail - 75002 PARIS - FRANCE

Non-contractual photos and colors - Indicative fitting - Fitting may vary depending on support selected