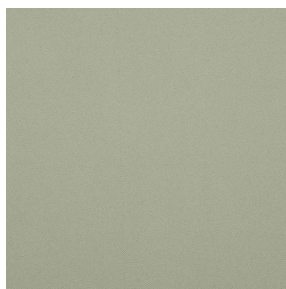


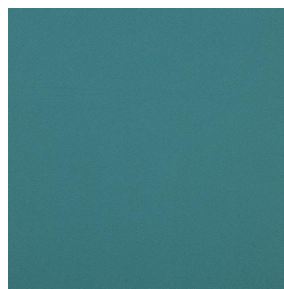
BORNEO ENVERS BLANC



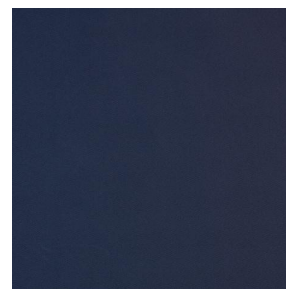
BORNEO ENVERS
BLANC CIEL 07



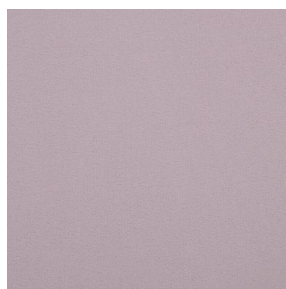
BORNEO ENVERS
BLANC MOUSSE 92



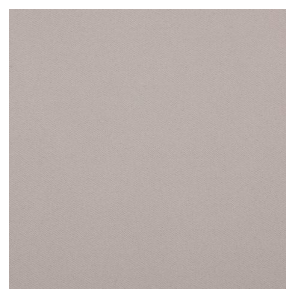
BORNEO ENVERS
BLANC EMERAUDE 88



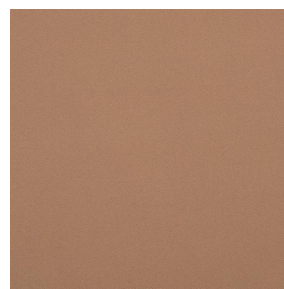
BORNEO ENVERS
BLANC INDIGO 144



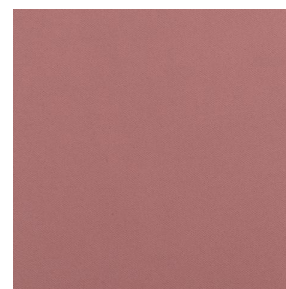
BORNEO ENVERS
BLANC ROSE 129



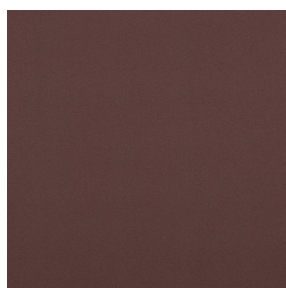
BORNEO ENVERS
BLANC CHANVRE 72



BORNEO ENVERS
BLANC SAFRAN 49



BORNEO ENVERS
BLANC CORAIL 14

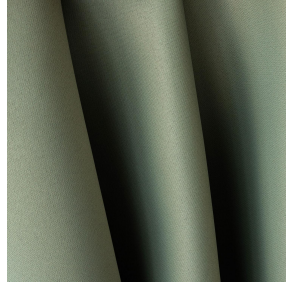
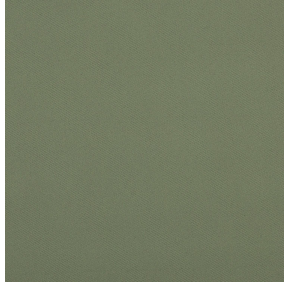


BORNEO ENVERS
BLANC BRUN 23



(Headquarters) SOTEXPRO - 510 route de Montchal - 42360 PANISSIÈRES - FRANCE - +33 4 77 27 60 60
(Showroom) Le LAB' SOTEXPRO - 4 rue du Mail - 75002 PARIS - FRANCE

Non-contractual photos and colors - Indicative fitting - Fitting may vary depending on support selected



BORNEO ENVERS BLANC KAKI 148

Propriétés techniques



Non feu



Thermique






Acoustique

Applications Store bateau - Rideaux

Composition 100 % polyester

Poids 440 g/m² Laize 280 cm

Sens Contre sens ou sens normal Raccord ↔ cm ↓ cm

Conseils d'entretien     

Certifications OEKO-TEX STANDARD 100 (CQ 1006/1)

Minimum commande 1 mètre(s) linéaire(s)

Caractéristiques techniques

Non feu	M1 / B1 / IMO PASS / UNI 8456 / 9174 Classe Uno
Acoustique	Coeff. moyen de réduction sonore (NRC) : 0.89 Coeff. d'absorption acoustique pondéré (a _w) : 0.90 Classe d'absorption acoustique (a _w) : A
Indices optiques	Réflexion lumière : 60 % Absorption lumière : 40 % Transmission lumière : 0 %
Indices thermiques	réflexion solaire : 56 % absorption solaire : 44 % Transmission solaire : 0 % Transmission UV : 0 % Gtot : Gt 39 % Fc 65 %
Résistance	Solidité lumière (unités Class/8) 6 Stabilité dimensionnelle (%) Chaîne -0.5 Trame 0 Allongement rupture (mm) Chaîne 31 Trame 0 Résistance rupture (daN) Chaîne 130 Trame 250



(Headquarters) SOTEXPRO - 510 route de Montchal - 42360 PANISSIÈRES - FRANCE - +33 4 77 27 60 60
(Showroom) Le LAB' SOTEXPRO - 4 rue du Mail - 75002 PARIS - FRANCE

Non-contractual photos and colors - Indicative fitting - Fitting may vary depending on support selected