

# COLLEGE



COLLEGE Naval 17



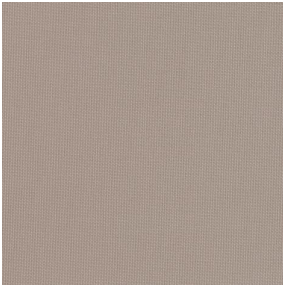
COLLEGE Anis 62



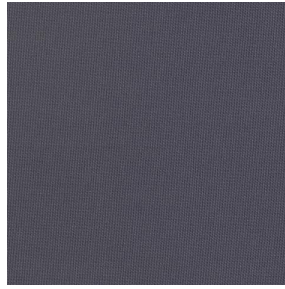
COLLEGE Poussin 20



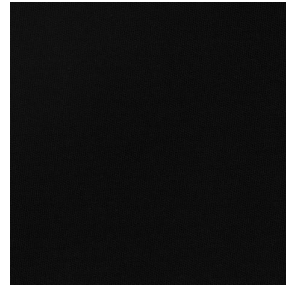
COLLEGE Ficelle 09



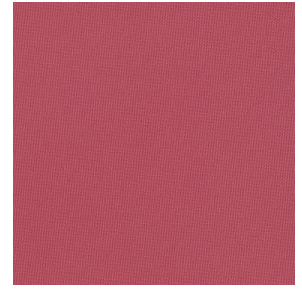
COLLEGE Naturel 26



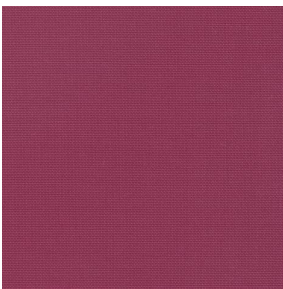
COLLEGE acier 18



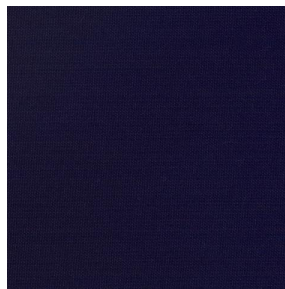
COLLEGE Noir 10



COLLEGE Corail 14



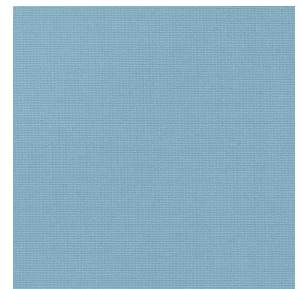
COLLEGE Framboise 81



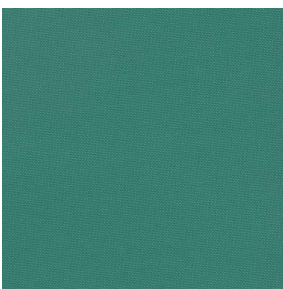
COLLEGE Marine 25



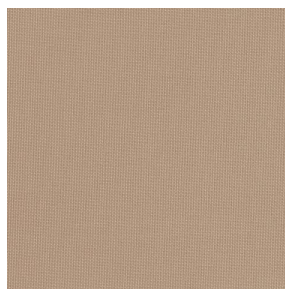
COLLEGE Gentiane 16



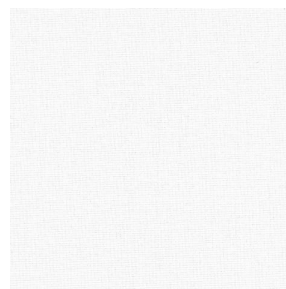
COLLEGE Turquoise 53



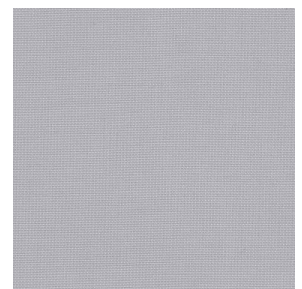
COLLEGE Vert 24



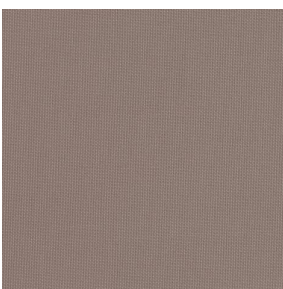
COLLEGE Mastic 48



COLLEGE Blanc 01



COLLEGE Souris 31



COLLEGE Moka 13



COLLEGE Mordoré 133



COLLEGE Paille 83



COLLEGE Pêche 52



(Headquarters) SOTEXPRO - 510 route de Montchal - 42360 PANISSIÈRES - FRANCE - +33 4 77 27 60 60  
(Showroom) Le LAB' SOTEXPRO - 4 rue du Mail - 75002 PARIS - FRANCE

Non-contractual photos and colors - Indicative fitting - Fitting may vary depending on support selected

# COLLEGE



COLLEGE Safran 49



COLLEGE Havane 44



COLLEGE Sanguine 05



COLLEGE Evêque 154



COLLEGE Bergamotte  
121



COLLEGE Olive 61



COLLEGE Absinthe 132



COLLEGE Indigo 144

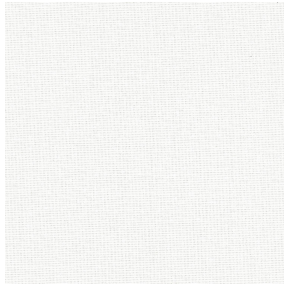


COLLEGE Titanium 98



(Headquarters) SOTEXPRO - 510 route de Montchal - 42360 PANISSIÈRES - FRANCE - +33 4 77 27 60 60  
(Showroom) Le LAB' SOTEXPRO - 4 rue du Mail - 75002 PARIS - FRANCE

*Non-contractual photos and colors - Indicative fitting - Fitting may vary depending on support selected*



# COLLEGE Nacre 04

Cette toile pare-soleil se décline autour d'une gamme de plusieurs coloris, vous offrant de grandes possibilités de décoration

## Propriétés techniques



Non feu



Thermique

**Applications** Store bateau - Parois japonaises - Rideaux - Décoration murale

**Composition** 100% polyester FR

**Poids** 200 g/m<sup>2</sup> **Laize** 140 cm / 280 cm

**Sens** Contre sens ou sens normal **Raccord** ↔ cm ↓ cm

**Conseils d'entretien**

**Labels** France Terre Textile (R016)

**Certifications** OEKO-TEX STANDARD 100 (CQ 1006/1)

**Minimum commande** 1 mètre(s) linéaire(s)

## Caractéristiques techniques

Non feu	M1 / B1 / IMO PASS / UNI 8456 / 9174 Classe Uno	
Indices optiques	Réflexion lumière :	57 %
	Absorption lumière :	15 %
	Transmission lumière :	28 %
Indices thermiques	réflexion solaire :	56 %
	absorption solaire :	14 %
	Transmission solaire :	30 %
	Transmission UV :	12 %
	Gtot :	Gt 39 % Fc 66 %
Résistance	Solidité lumière (unités Class/8)	6
	Stabilité dimensionnelle (%)	
	Chaîne	-2.5
	Trame	-0.5
	Allongement rupture (mm)	
	Chaîne	23
	Trame	24
	Résistance rupture (daN)	
	Chaîne	93
Trame	120	



(Headquarters) SOTEXPRO - 510 route de Montchal - 42360 PANISSIÈRES - FRANCE - +33 4 77 27 60 60  
(Showroom) Le LAB' SOTEXPRO - 4 rue du Mail - 75002 PARIS - FRANCE

Non-contractual photos and colors - Indicative fitting - Fitting may vary depending on support selected