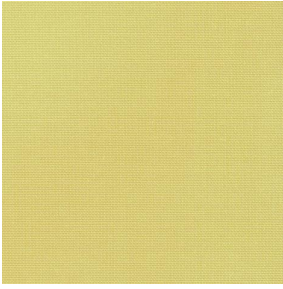


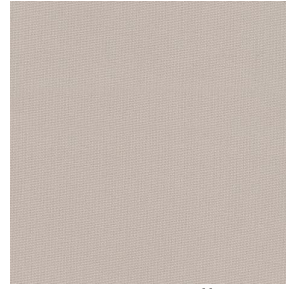
COLLEGE



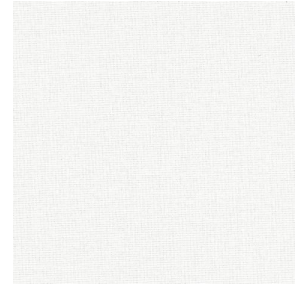
COLLEGE Anis 62



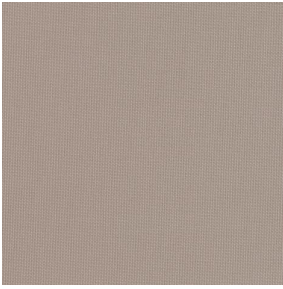
COLLEGE Poussin 20



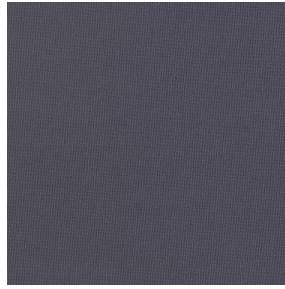
COLLEGE Ficelle 09



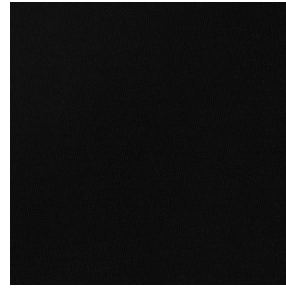
COLLEGE Nacre 04



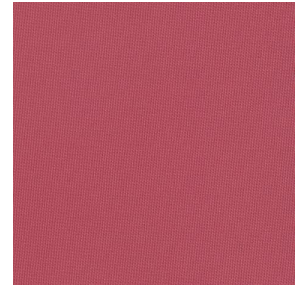
COLLEGE Naturel 26



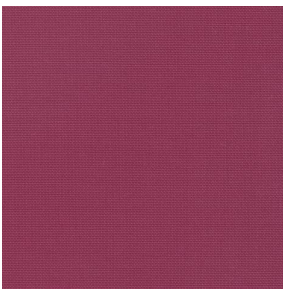
COLLEGE acier 18



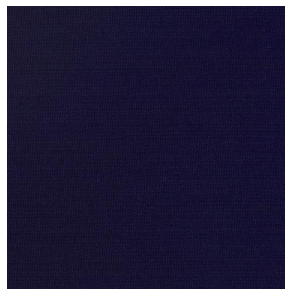
COLLEGE Noir 10



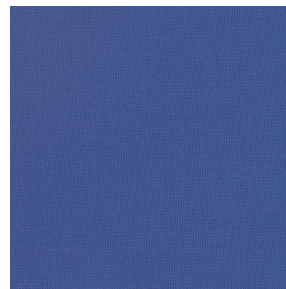
COLLEGE Corail 14



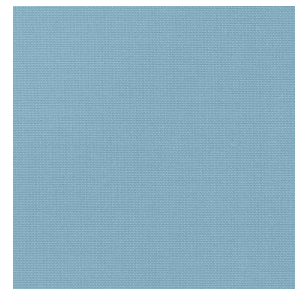
COLLEGE Framboise 81



COLLEGE Marine 25



COLLEGE Gentiane 16



COLLEGE Turquoise 53



COLLEGE Vert 24



COLLEGE Mastic 48



COLLEGE Blanc 01



COLLEGE Souris 31



COLLEGE Moka 13



COLLEGE Mordoré 133



COLLEGE Paille 83



COLLEGE Pêche 52



(Headquarters) SOTEXPRO - 510 route de Montchal - 42360 PANISSIÈRES - FRANCE - +33 4 77 27 60 60
(Showroom) Le LAB' SOTEXPRO - 4 rue du Mail - 75002 PARIS - FRANCE

Non-contractual photos and colors - Indicative fitting - Fitting may vary depending on support selected

COLLEGE



COLLEGE Safran 49



COLLEGE Havane 44



COLLEGE Sanguine 05



COLLEGE Evêque 154



COLLEGE Bergamotte
121



COLLEGE Olive 61



COLLEGE Absinthe 132



COLLEGE Indigo 144

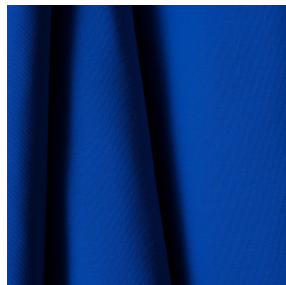
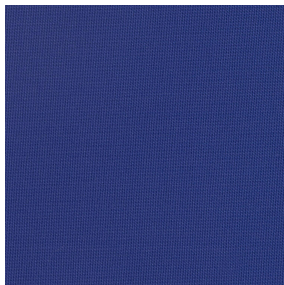


COLLEGE Titanium 98



(Headquarters) SOTEXPRO - 510 route de Montchal - 42360 PANISSIÈRES - FRANCE - +33 4 77 27 60 60
(Showroom) Le LAB' SOTEXPRO - 4 rue du Mail - 75002 PARIS - FRANCE

Non-contractual photos and colors - Indicative fitting - Fitting may vary depending on support selected



COLLEGE Naval 17

Cette toile pare-soleil se décline autour d'une gamme de plusieurs coloris, vous offrant de grandes possibilités de décoration

Propriétés techniques



Non feu



Thermique

Applications Store bateau - Parois japonaises - Rideaux - Décoration murale

Composition 100% polyester FR

Poids 200 g/m² Laize 140 cm / 280 cm

Sens Contre sens ou sens normal Raccord ↔ cm ↓ cm

Conseils d'entretien     

Labels France Terre Textile (R016)

Certifications OEKO-TEX STANDARD 100 (CQ 1006/1)

Minimum commande 1 mètre(s) linéaire(s)

Caractéristiques techniques

Non feu	M1 / B1 / IMO PASS / UNI 8456 / 9174 Classe Uno
Indices optiques	Réflexion lumière : 21 %
	Absorption lumière : 71 %
	Transmission lumière : 8 %
Indices thermiques	réflexion solaire : 43 %
	absorption solaire : 35 %
	Transmission solaire : 22 %
	Transmission UV : 8 %
	Gtot : Gt 43 % Fc 73 %
Résistance	Solidité lumière (unités Class/8) 6
	Stabilité dimensionnelle (%)
	Chaîne -2
	Trame -0.5
	Allongement rupture (mm)
	Chaîne 23
	Trame 24
	Résistance rupture (daN)
	Chaîne 93
Trame 120	



(Headquarters) SOTEXPRO - 510 route de Montchal - 42360 PANISSIÈRES - FRANCE - +33 4 77 27 60 60
(Showroom) Le LAB' SOTEXPRO - 4 rue du Mail - 75002 PARIS - FRANCE

Non-contractual photos and colors - Indicative fitting - Fitting may vary depending on support selected