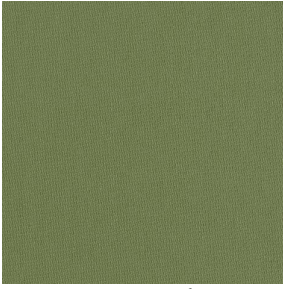
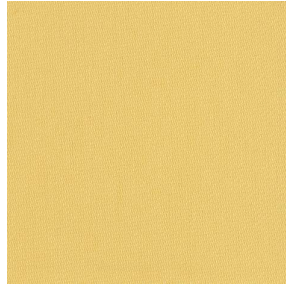


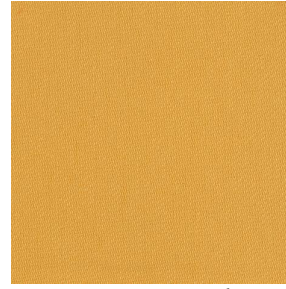
COLLIOURE



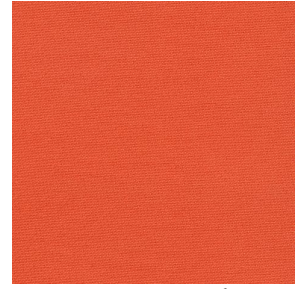
COLLIOURE Olive 61



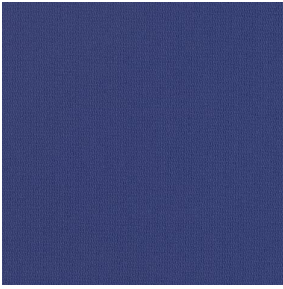
COLLIOURE Agrume 69



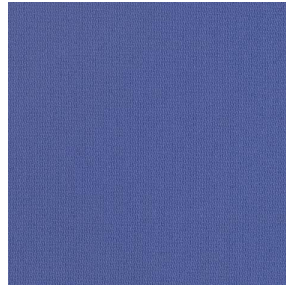
COLLIOURE Miel 17



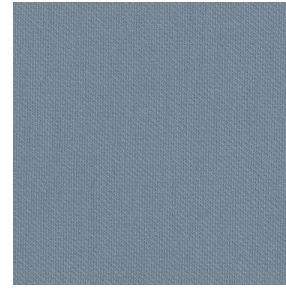
COLLIOURE Mandarine
93



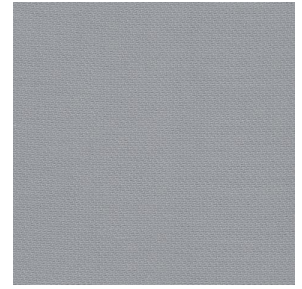
COLLIOURE Océan 91



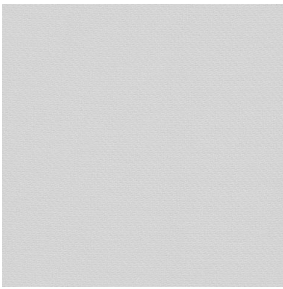
COLLIOURE Pervenche
13



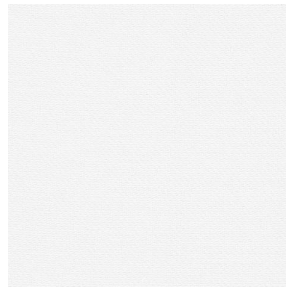
COLLIOURE Ardoise 08



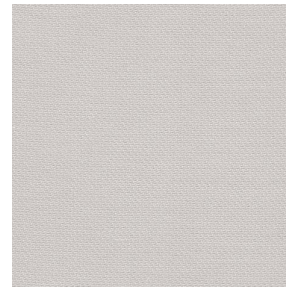
COLLIOURE Glacier 43



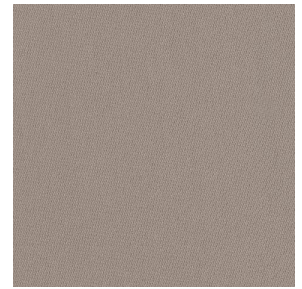
COLLIOURE Souris 31



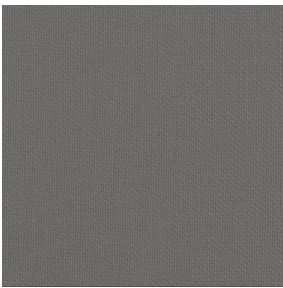
COLLIOURE Blanc 01



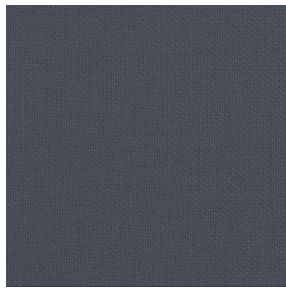
COLLIOURE Ivoire 02



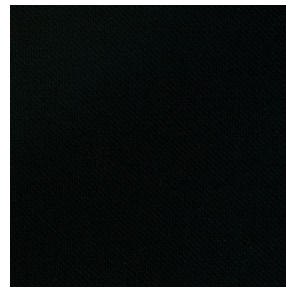
COLLIOURE Naturel 26



COLLIOURE Brun 23



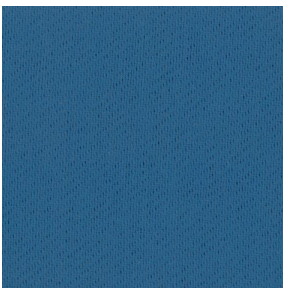
COLLIOURE Titanium 98



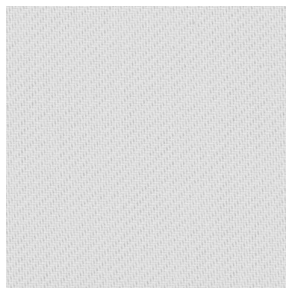
COLLIOURE Noir 12



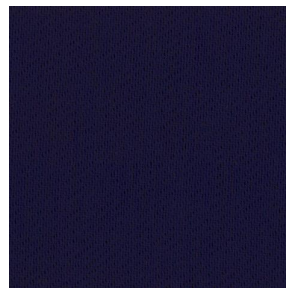
COLLIOURE eucalyptus
117



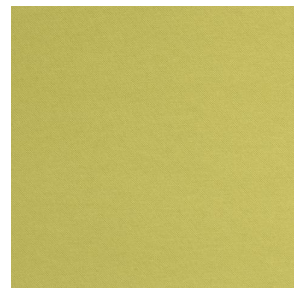
COLLIOURE navy 120



COLLIOURE lin 11



COLLIOURE marine 25



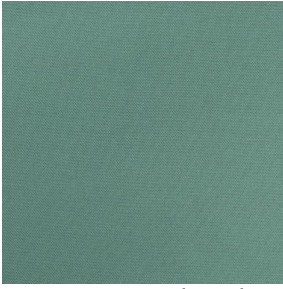
COLLIOURE
Bergamotte 121



(Headquarters) SOTEXPRO - 510 route de Montchal - 42360 PANISSIÈRES - FRANCE - +33 4 77 27 60 60
(Showroom) Le LAB' SOTEXPRO - 4 rue du Mail - 75002 PARIS - FRANCE

Non-contractual photos and colors - Indicative fitting - Fitting may vary depending on support selected

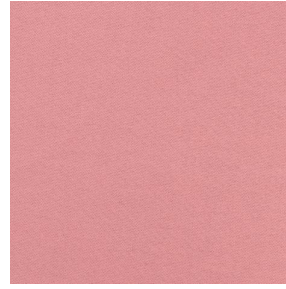
COLLIOURE



COLLIOURE Absinthe
132



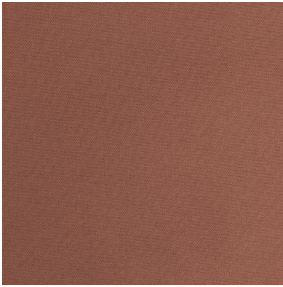
COLLIOURE Arctique 58



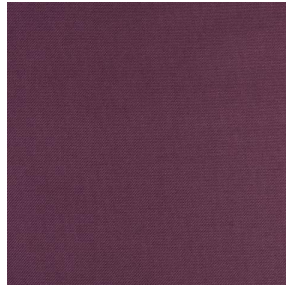
COLLIOURE Saumon
143



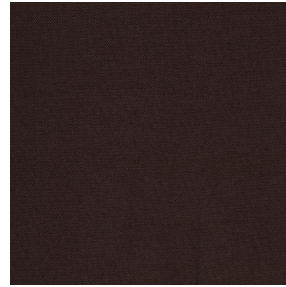
COLLIOURE Tomette 60



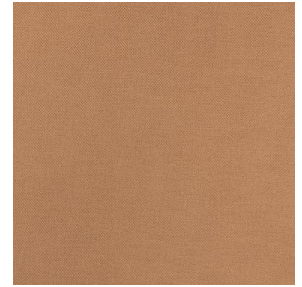
COLLIOURE Terre 107



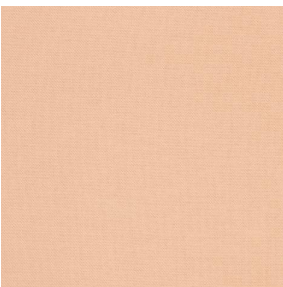
COLLIOURE Aubergine
27



COLLIOURE Cacao 168



COLLIOURE Chamois
111

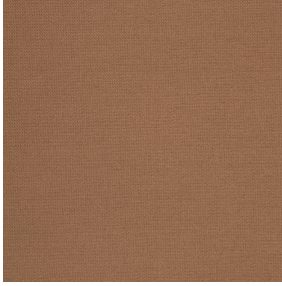


COLLIOURE Pêche 52



(Headquarters) SOTEXPRO - 510 route de Montchal - 42360 PANISSIÈRES - FRANCE - +33 4 77 27 60 60
(Showroom) Le LAB' SOTEXPRO - 4 rue du Mail - 75002 PARIS - FRANCE

Non-contractual photos and colors - Indicative fitting - Fitting may vary depending on support selected



COLLIOURE Chataigne 55

Ce tissu uni sergé se décline autour d'une gamme de plusieurs coloris

Propriétés techniques



Non feu



Thermique

Applications Store bateau - Parois japonaises - Cache sommier - Rideaux - Coussin - Décoration murale

Composition 100 % polyester FR

Poids 270 g/m² **Laize** 140 cm / 280 cm

Sens Contre sens ou sens normal **Raccord** ↔ cm ↓ cm

Conseils d'entretien

Labels France Terre Textile (R016)

Certifications OEKO-TEX STANDARD 100 (CQ 1006/1)

Minimum commande 1 mètre(s) linéaire(s)

Caractéristiques techniques

Non feu

M1 / B1 / IMO PASS / UNI 8456 / 9174 Classe Uno

Indices optiques

Réflexion lumière : **64 %**

Absorption lumière : **19 %**

Transmission lumière : **17 %**

Indices thermiques

réflexion solaire : **64 %**

absorption solaire : **17 %**

Transmission solaire : **19 %**

Transmission UV : **3 %**

Gtot : **Gt 36 % Fc 61 %**

Résistance

Solidité lumière (unités Class/8) **6**

Stabilité dimensionnelle (%)

Chaîne **-3**

Trame **-0.5**

Allongement rupture (mm)

Chaîne **26**

Trame **28**

Résistance rupture (daN)

Chaîne **100**

Trame **160**



(Headquarters) SOTEXPRO - 510 route de Montchal - 42360 PANISSIÈRES - FRANCE - +33 4 77 27 60 60
(Showroom) Le LAB' SOTEXPRO - 4 rue du Mail - 75002 PARIS - FRANCE

Non-contractual photos and colors - Indicative fitting - Fitting may vary depending on support selected