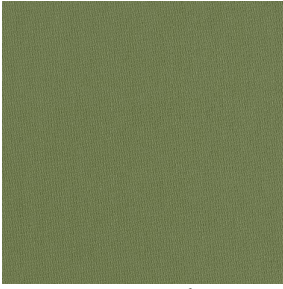
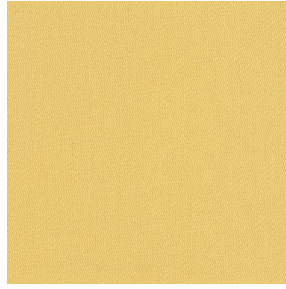


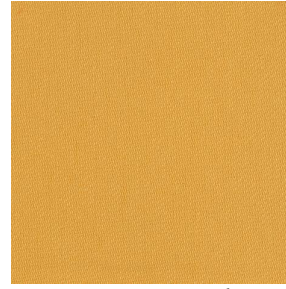
# COLLIOURE



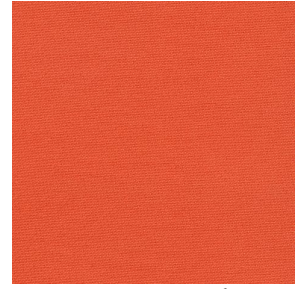
COLLIOURE Olive 61



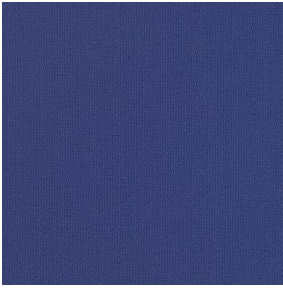
COLLIOURE Agrume 69



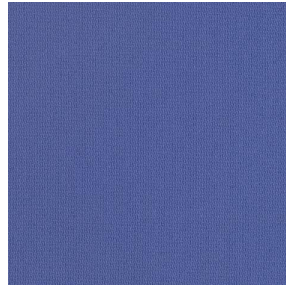
COLLIOURE Miel 17



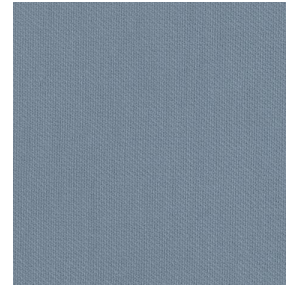
COLLIOURE Mandarine  
93



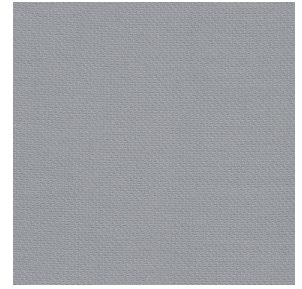
COLLIOURE Océan 91



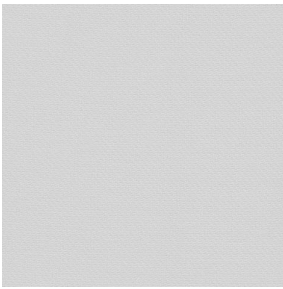
COLLIOURE Pervenche  
13



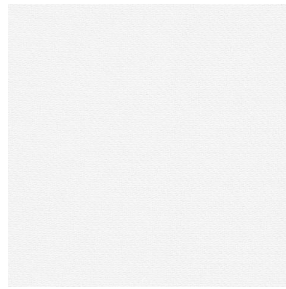
COLLIOURE Ardoise 08



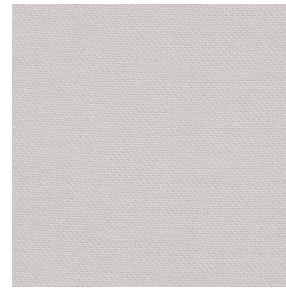
COLLIOURE Glacier 43



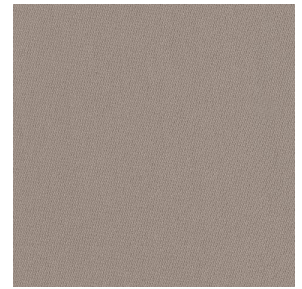
COLLIOURE Souris 31



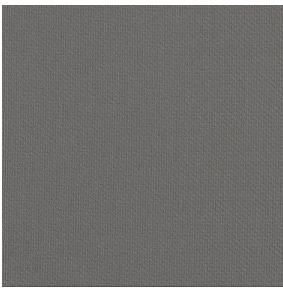
COLLIOURE Blanc 01



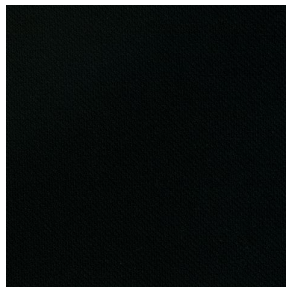
COLLIOURE Ivoire 02



COLLIOURE Naturel 26



COLLIOURE Brun 23



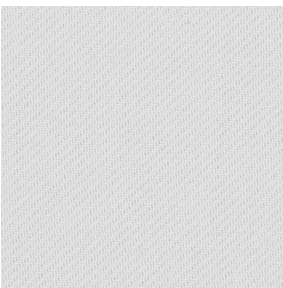
COLLIOURE Noir 12



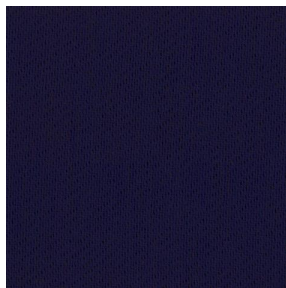
COLLIOURE eucalyptus  
117



COLLIOURE navy 120



COLLIOURE lin 11



COLLIOURE marine 25



COLLIOURE  
Bergamotte 121



COLLIOURE Absinthe  
132



(Headquarters) SOTEXPRO - 510 route de Montchal - 42360 PANISSIÈRES - FRANCE - +33 4 77 27 60 60  
(Showroom) Le LAB' SOTEXPRO - 4 rue du Mail - 75002 PARIS - FRANCE

Non-contractual photos and colors - Indicative fitting - Fitting may vary depending on support selected

# COLLIOURE



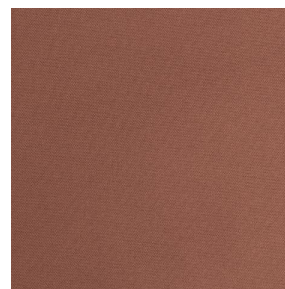
COLLIOURE Arctique 58



COLLIOURE Saumon  
143



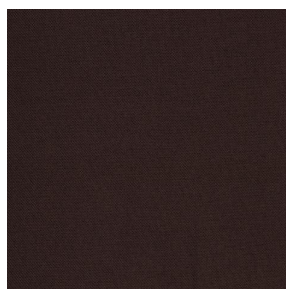
COLLIOURE Tomette 60



COLLIOURE Terre 107



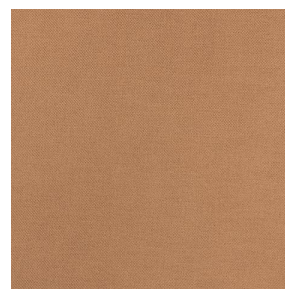
COLLIOURE Aubergine  
27



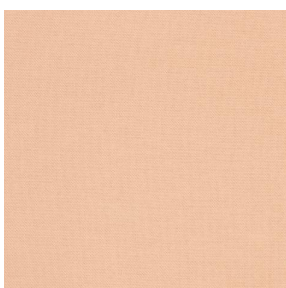
COLLIOURE Cacao 168



COLLIOURE Chataigne  
55



COLLIOURE Chamois  
111

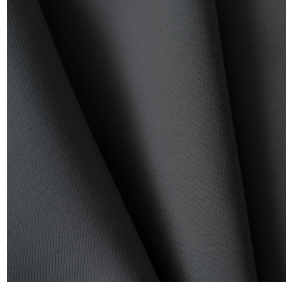


COLLIOURE Pêche 52



(Headquarters) SOTEXPRO - 510 route de Montchal - 42360 PANISSIÈRES - FRANCE - +33 4 77 27 60 60  
(Showroom) Le LAB' SOTEXPRO - 4 rue du Mail - 75002 PARIS - FRANCE

*Non-contractual photos and colors - Indicative fitting - Fitting may vary depending on support selected*



# COLLIOURE Titanium 98

Ce tissu uni sergé se décline autour d'une gamme de plusieurs coloris

## Propriétés techniques



Non feu



Thermique

**Applications** Store bateau - Parois japonaises - Cache sommier - Rideaux - Coussin - Décoration murale

**Composition** 100% polyester FR

**Poids** 270 g/m<sup>2</sup> **Laize** 140 cm / 280 cm

**Sens** Contre sens ou sens normal **Raccord** ↔ cm ↓ cm

**Conseils d'entretien**

**Labels** France Terre Textile (R016)

**Certifications** OEKO-TEX STANDARD 100 (CQ 1006/1)

**Minimum commande** 1 mètre(s) linéaire(s)



## Caractéristiques techniques

Non feu

M1 / B1 / IMO PASS / UNI 8456 / 9174 Classe Uno

Indices optiques

Réflexion lumière : **10 %**

Absorption lumière : **86 %**

Transmission lumière : **4 %**

Indices thermiques

réflexion solaire : **37 %**

absorption solaire : **46 %**

Transmission solaire : **17 %**

Transmission UV : **5 %**

Gtot : **Gt 45 % Fc 76 %**

Résistance

Solidité lumière (unités Class/8) **4**

Stabilité dimensionnelle (%)

Chaîne **-3**

Trame **-0.5**

Allongement rupture (mm)

Chaîne **26**

Trame **28**

Résistance rupture (daN)

Chaîne **100**

Trame **160**



(Headquarters) SOTEXPRO - 510 route de Montchal - 42360 PANISSIÈRES - FRANCE - +33 4 77 27 60 60  
(Showroom) Le LAB' SOTEXPRO - 4 rue du Mail - 75002 PARIS - FRANCE

Non-contractual photos and colors - Indicative fitting - Fitting may vary depending on support selected