

# COMET MUNA 2199



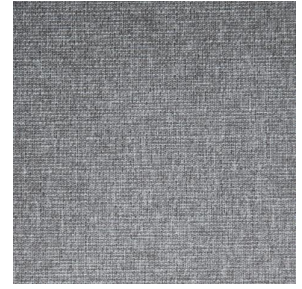
COMET MUNA 2199  
Coco 142



COMET MUNA 2199  
Sable 67



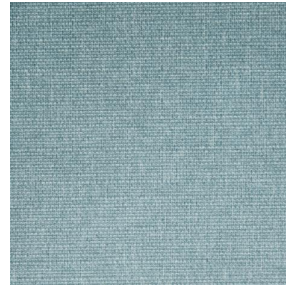
COMET MUNA 2199  
Saumon 143



COMET MUNA 2199  
Sisal 140



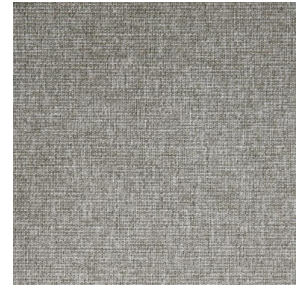
COMET MUNA 2199  
Tourterelle 138



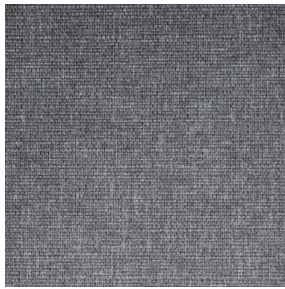
COMET MUNA 2199  
Ardoise 87



COMET MUNA 2199  
Tilleul 103



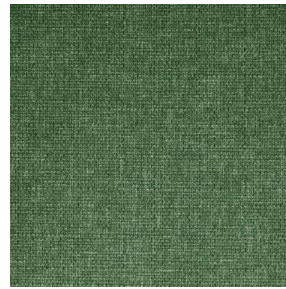
COMET MUNA 2199  
Chanvre 72



COMET MUNA 2199  
Graphite 77



COMET MUNA 2199  
Olive 61



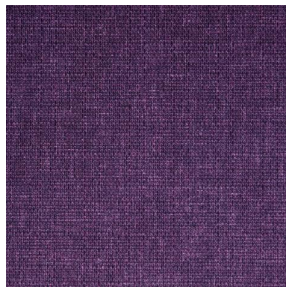
COMET MUNA 2199  
Lierre 124



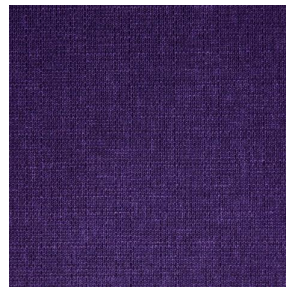
COMET MUNA 2199  
Indigo 144



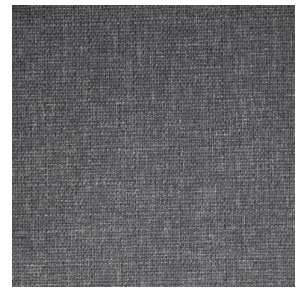
COMET MUNA 2199  
Rouge 21



COMET MUNA 2199  
Saphir 106



COMET MUNA 2199  
Violine 105



COMET MUNA 2199  
Titanium 98

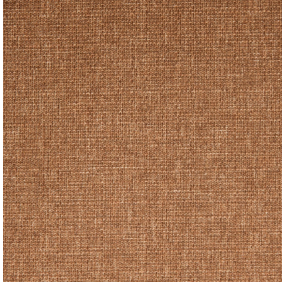


COMET MUNA 2199  
Acier 18



(Headquarters) SOTEXPRO - 510 route de Montchal - 42360 PANISSIÈRES - FRANCE - +33 4 77 27 60 60

Non-contractual photos and colors - Indicative fitting - Fitting may vary depending on support selected



# COMET MUNA 2199

## Sienna 29

Occultant relié imprimé motif effet faux uni chiné, l'occultation est obtenue grâce à son envers floqué acrylique blanc.

### Propriétés techniques

**Applications** Store bateau - Parois japonaises - Rideaux

**Composition** 100 % polyester/acrylique envers floqué blanc

**Poids** 390 g/m<sup>2</sup> **Laize** 280 cm

**Sens** Contre sens ou sens normal **Raccord** ↔ cm ↓ cm

**Conseils d'entretien**     

**Minimum commande** 25 mètre(s) linéaire(s)

## Caractéristiques techniques

Non feu

EN13773 : 2003 Class 1 / BS 5867 TYPE B / B1 / IMO PASS / UNI 8456 / 9174 Classe Uno

Résistance

Stabilité dimensionnelle (%)

Chaîne 0

Trame 0

Allongement rupture (mm)

Chaîne 38

Trame 38

Résistance rupture (daN)

Chaîne 170

Trame 120



(Headquarters) SOTEXPRO - 510 route de Montchal - 42360 PANISSIÈRES - FRANCE - +33 4 77 27 60 60

Non-contractual photos and colors - Indicative fitting - Fitting may vary depending on support selected