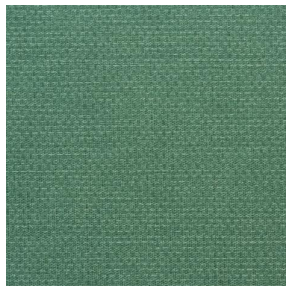


COMET OSIER 2300



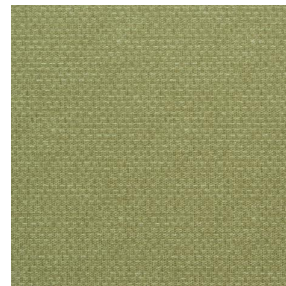
COMET OSIER 2300
Tempête 179



COMET OSIER 2300
Romarin 176



COMET OSIER 2300
Fenouil 177



COMET OSIER 2300
Bergamotte 121



COMET OSIER 2300
Poterie 167



COMET OSIER 2300
Truffe 189



COMET OSIER 2300
Ardoise 87



COMET OSIER 2300
Minéral 157



COMET OSIER 2300
Poivre 181



COMET OSIER 2300
Etain 180



COMET OSIER 2300 Lin
11



(Headquarters) SOTEXPRO - 510 route de Montchal - 42360 PANISSIÈRES - FRANCE - +33 4 77 27 60 60
(Showroom) Le LAB' SOTEXPRO - 4 rue du Mail - 75002 PARIS - FRANCE

Non-contractual photos and colors - Indicative fitting - Fitting may vary depending on support selected



COMET OSIER 2300 Miel 17

Occultant relié imprimé motif effet natté, l'occultation est obtenue grâce à son envers floqué acrylique blanc.





Propriétés techniques

Applications Store bateau - Parois japonaises - Rideaux

Composition 100 % polyester/acrylique envers floqué blanc

Poids 390 g/m² **Laize** 280 cm

Sens Contre sens ou sens normal **Raccord** ↔ cm ↓ cm

Conseils d'entretien     

Minimum commande 25 mètre(s) linéaire(s)

Caractéristiques techniques

Non feu

EN13773 : 2003 Class 1 / BS 5867 TYPE B / B1 / IMO PASS /
UNI 8456 / 9174 Classe Uno

Résistance

Stabilité dimensionnelle (%)

Chaîne 0

Trame 0

Allongement rupture (mm)

Chaîne 38

Trame 38

Résistance rupture (daN)

Chaîne 170

Trame 120



(Headquarters) SOTEXPRO - 510 route de Montchal - 42360 PANISSIÈRES - FRANCE - +33 4 77 27 60 60
(Showroom) Le LAB' SOTEXPRO - 4 rue du Mail - 75002 PARIS - FRANCE

Non-contractual photos and colors - Indicative fitting - Fitting may vary depending on support selected